

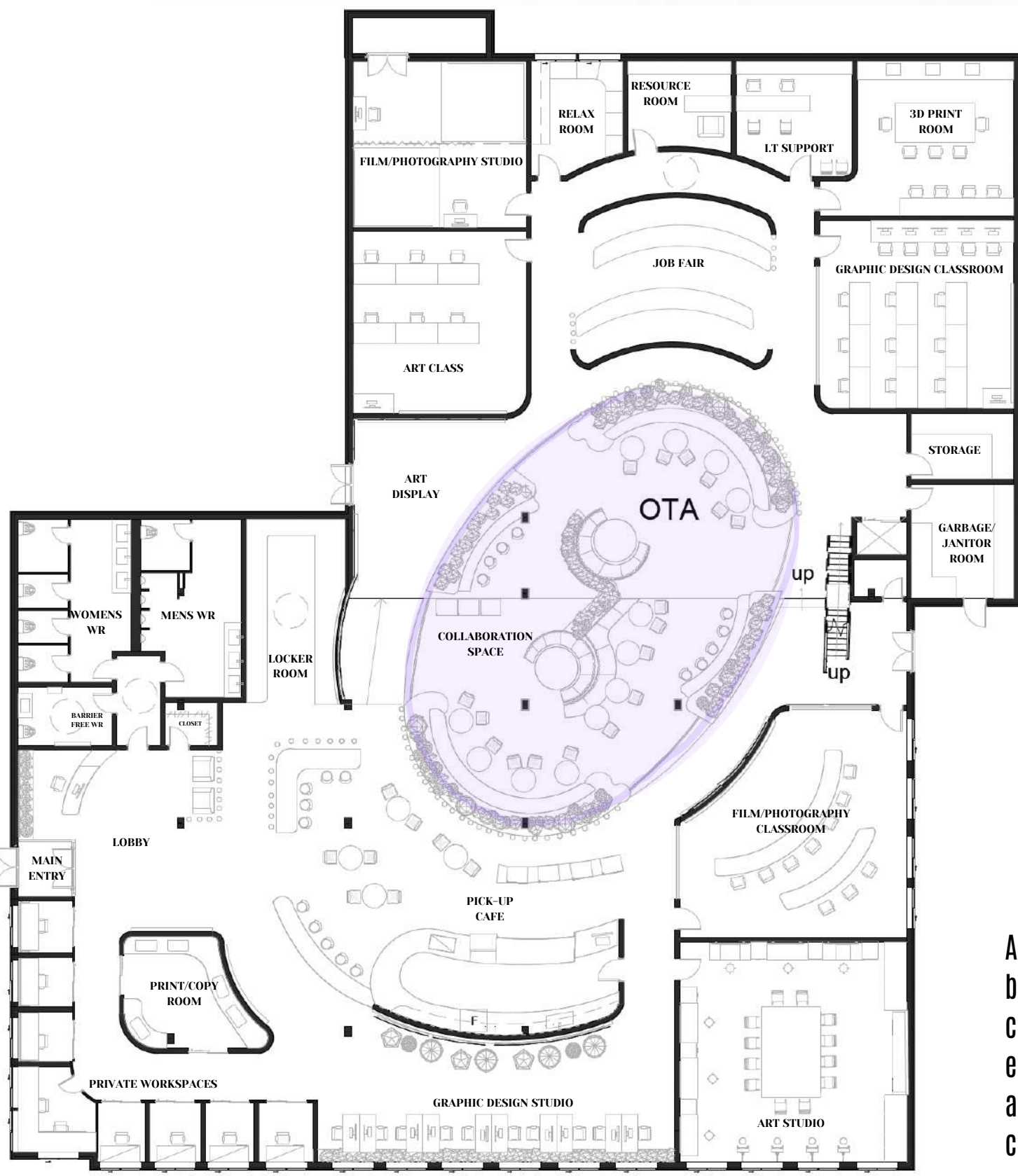


# CREATIVE STUDIO/EDUCATION FOR ART STUDENTS

ALEXIA MOLINARO

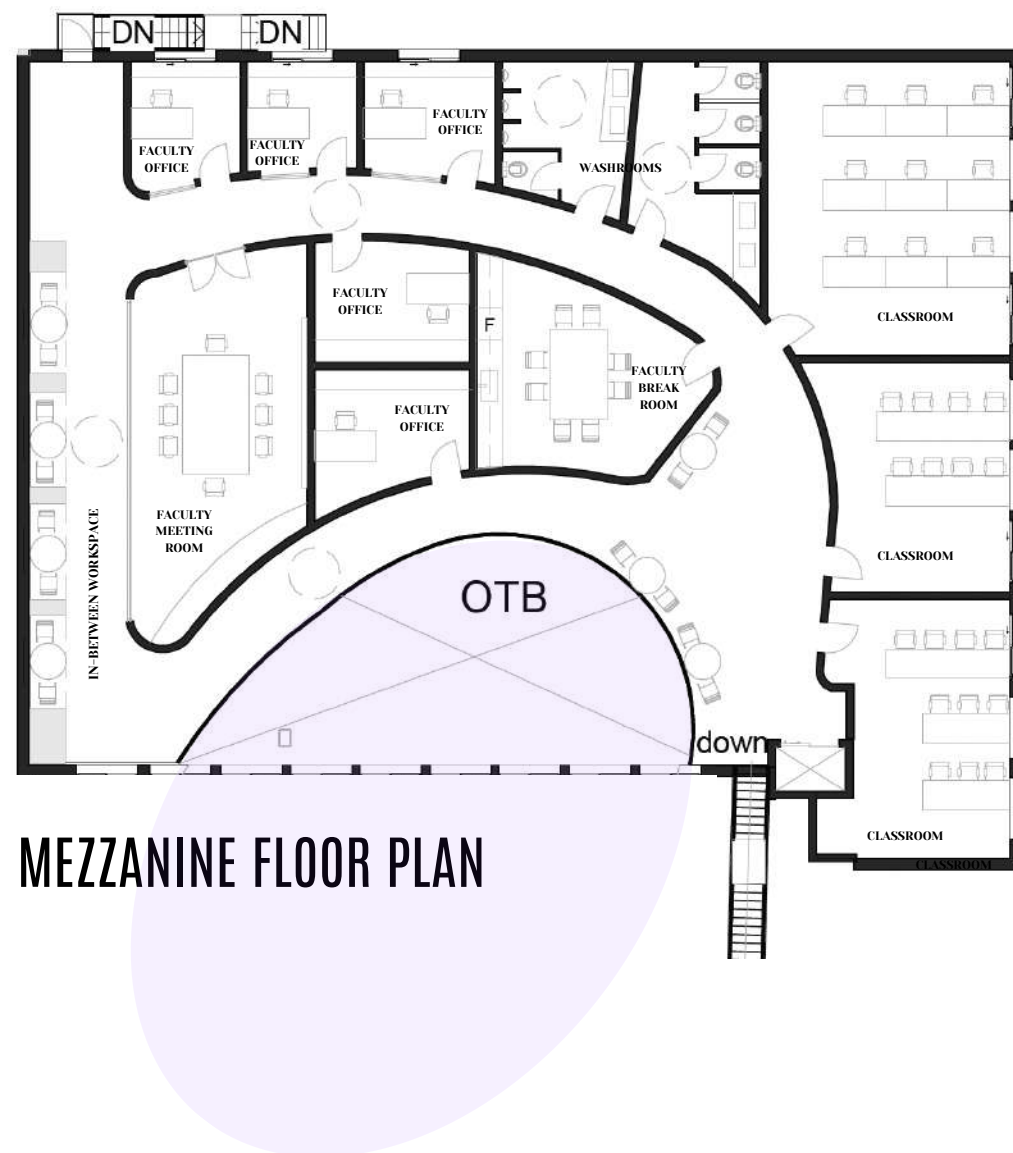


SITE SECTION



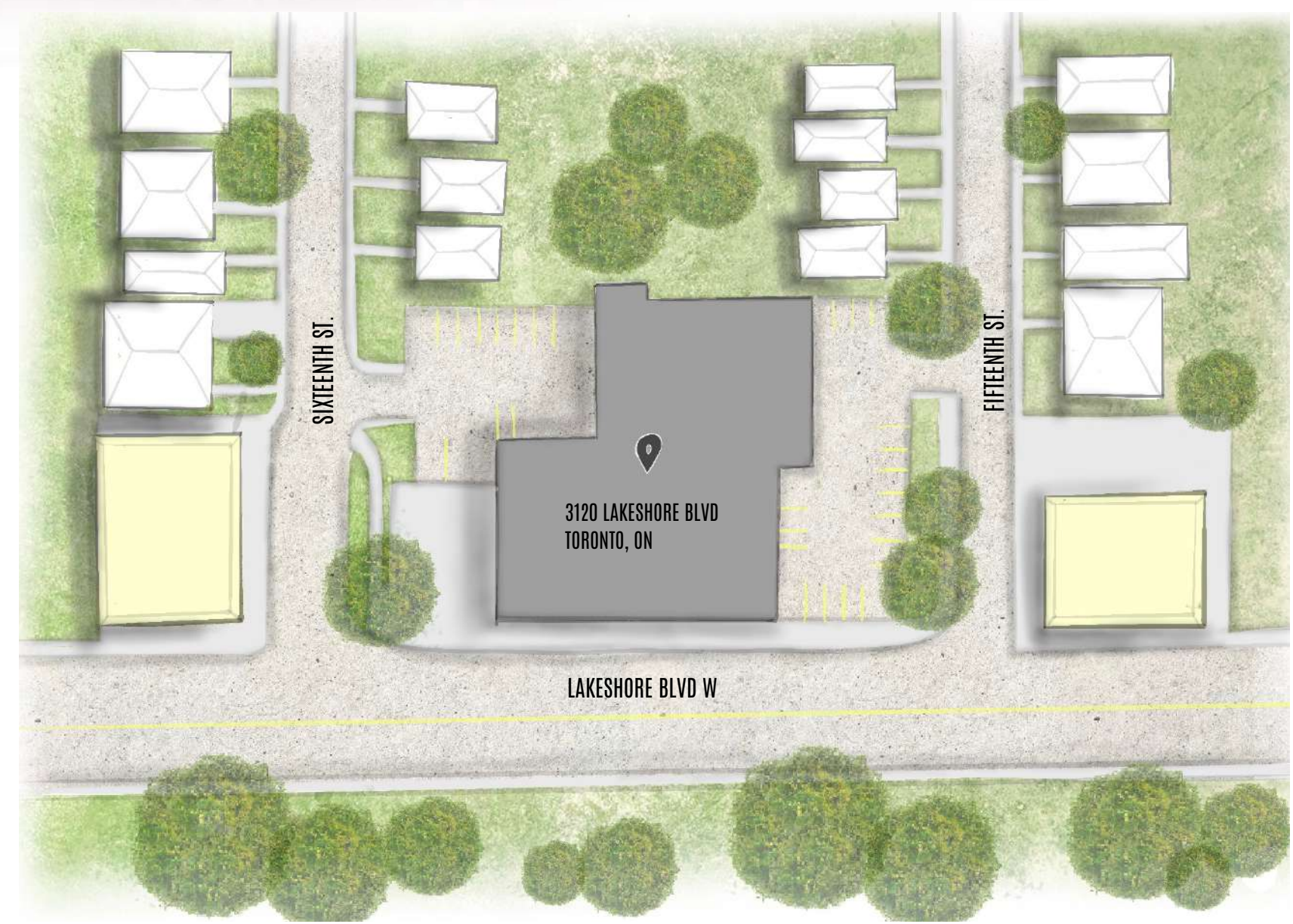
GROUND FLOOR PLAN

FOCAL AREA



MEZZANINE FLOOR PLAN

At the creative studio/education facility, students not only further their skills but also receive additional support to navigate their career paths within the creative field. Students collaborate on projects, preparing them for future encounters where art disciplines inevitably intersect. Additionally, it provides a valuable networking opportunity and recognizes the importance of connections in today's professional landscape.

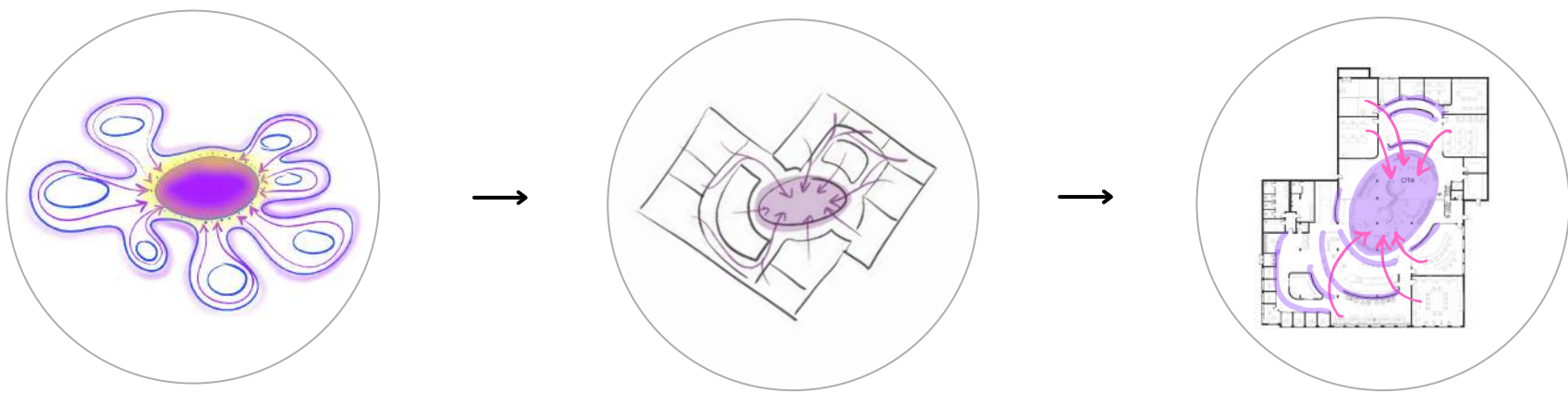


SITE PLAN

RETAIL RESIDENTIAL CREATIVE STUDIO/EDUCATION

## SYN•ER•GY

A COMBINATION OF ELEMENTS THAT CREATES SOMETHING GREATER THAN IF THEY WERE ON THEIR OWN.



The concept, inspired by synergy, envisions a central space for students to collaborate, learn from each other, and empathize with each other's challenges. Each art discipline has its own dedicated space around this central hub, but at the end of the day, students come together in the central area to share their experiences and insights, enriching their learning journey even further rather than if they were on their own.



PRIVATE WORKSPACE / LOBBY ELEVATION



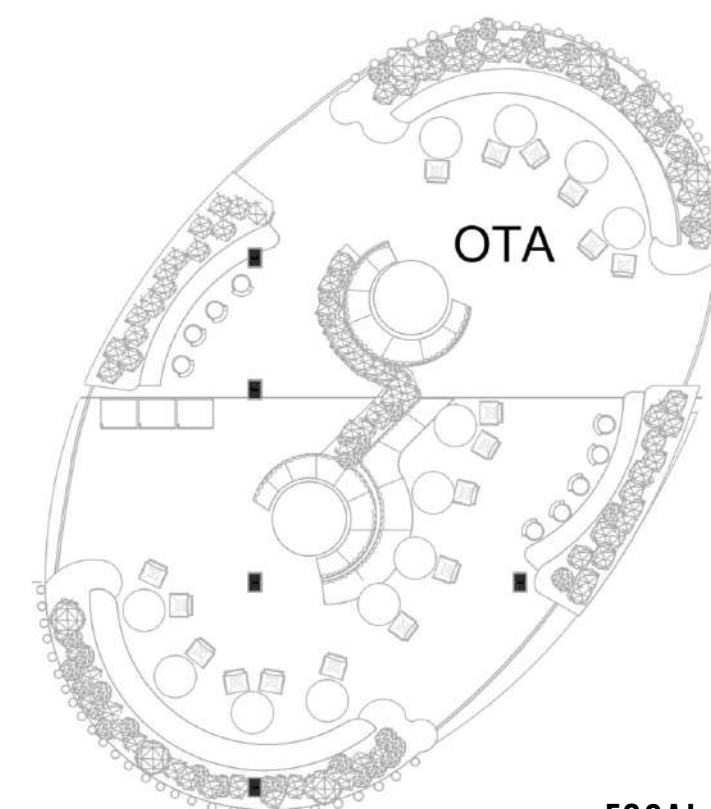
FOCAL AREA



## COLLABORATION SPACE

The collaboration space is designed to foster interaction and connection among students in several ways. The round seating arrangement encourages face-to-face conversation and enables students to easily see and engage with each other.

The visibility within the space fosters motivation, as students are inspired by witnessing their peers engaged in productive and creative work. Student artwork displayed on the walls further enhances a motivational atmosphere, providing constant reminders of the talent and dedication within the community. This environment encourages students to stay driven in their creativity in a shared environment of artistic expression.



FOCAL AREA PLAN

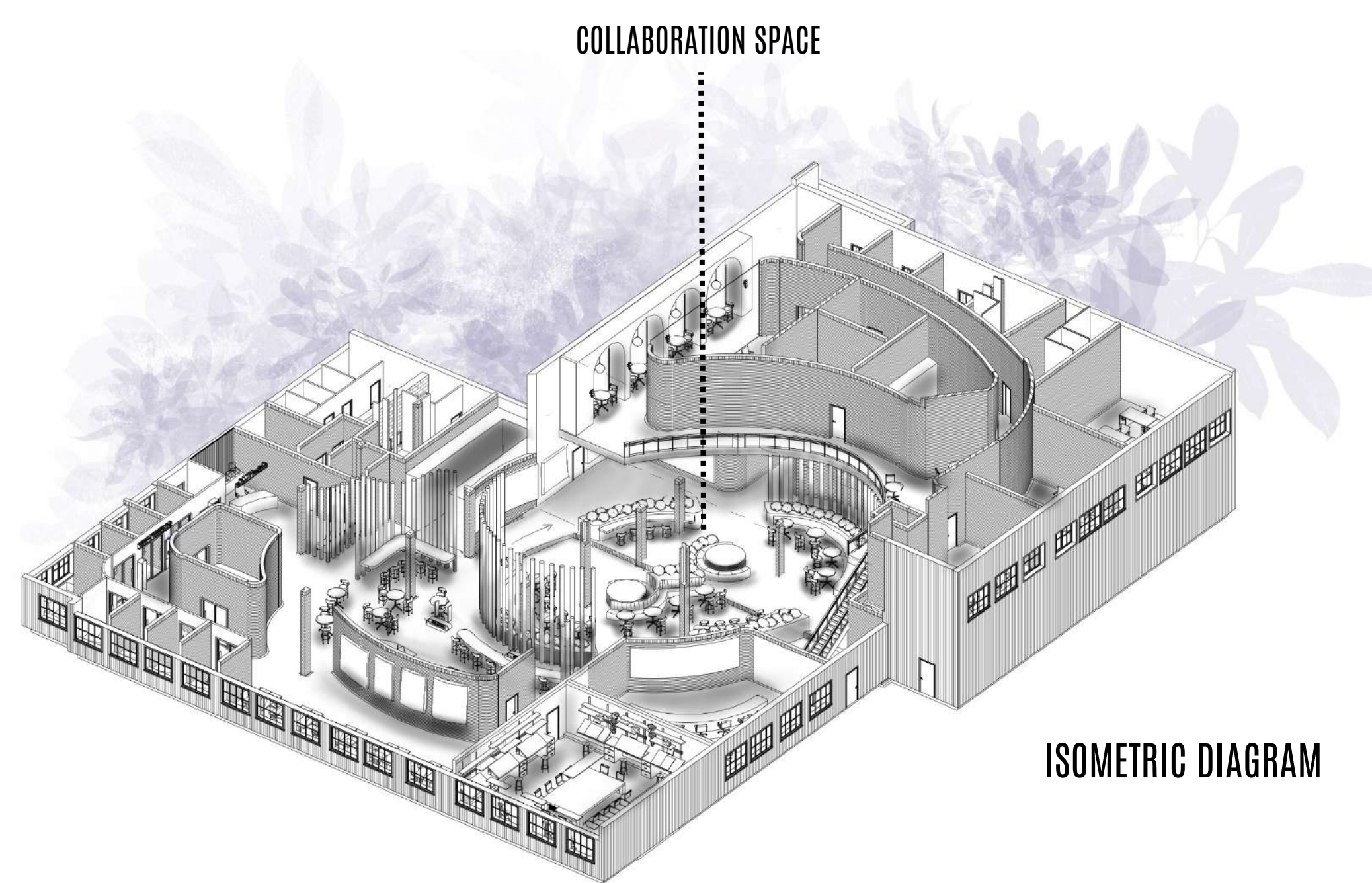


MATERIALS

The collaboration space offers a unique perspective that enables individuals on different levels to observe and engage with one another. Students can witness their peers actively collaborating and participating from the mezzanine, fostering a sense of connection and community throughout the space.



GRAPHIC DESIGN STUDIO

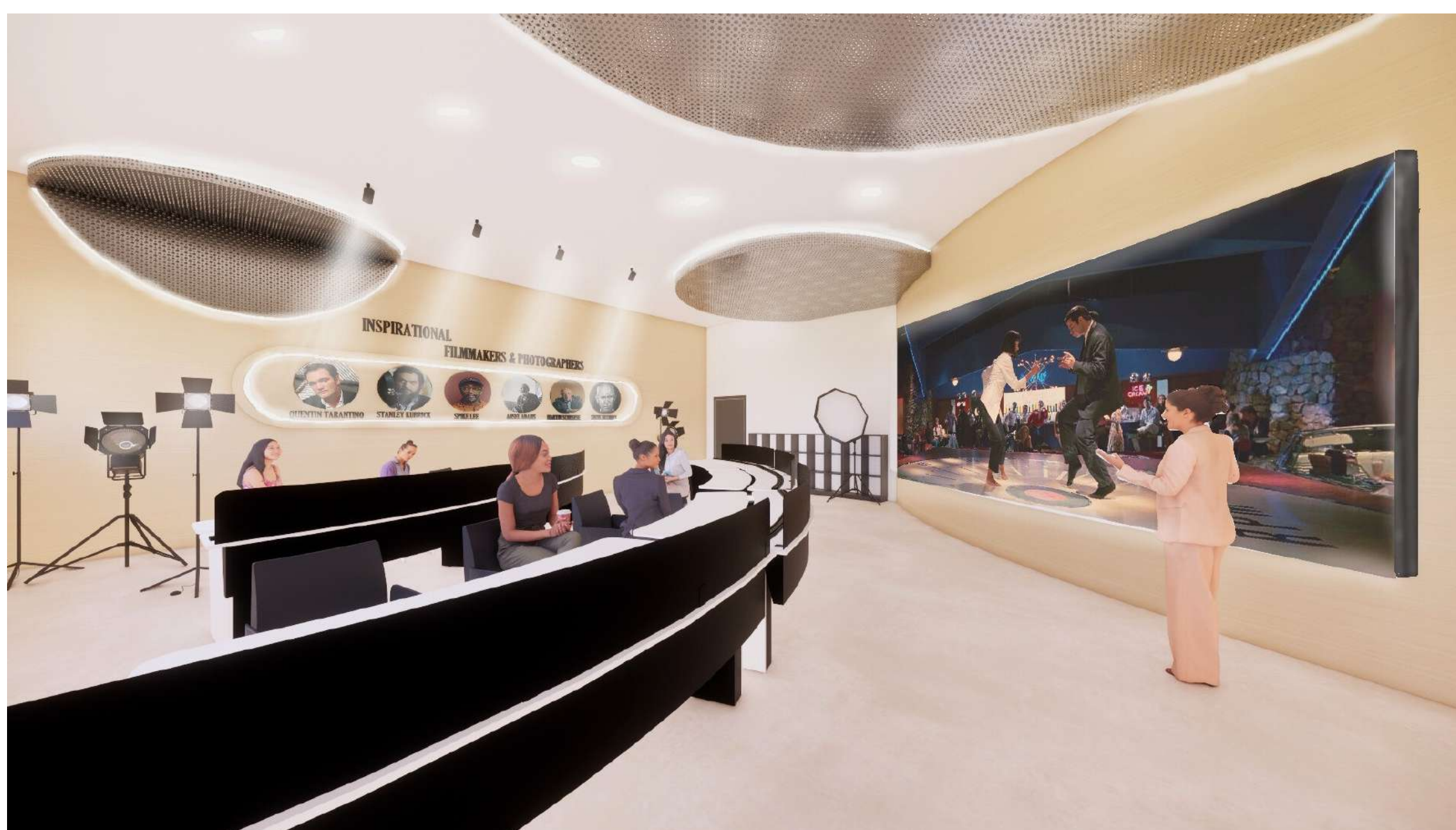


ISOMETRIC DIAGRAM

## STUDIOS/CLASSROOMS

The studios and classrooms are designed to serve as inspiring environments for students. With light colours and subtle hints of vibrant hues strategically incorporated throughout, these spaces are intended to evoke a sense of motivation and creativity. Natural lighting is used throughout these spaces to create an optimal setting for artistic expression.

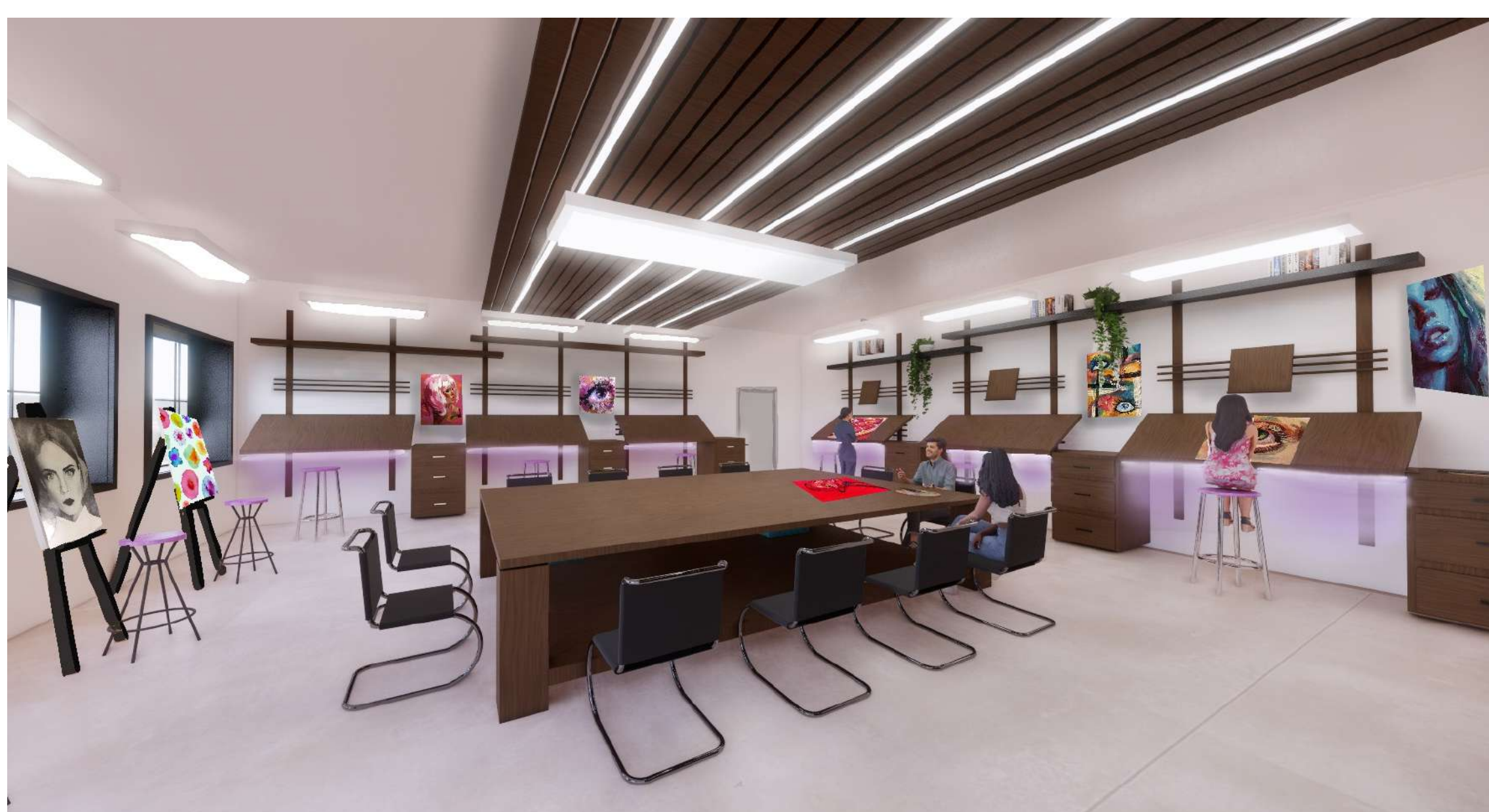
Each studio/classroom in the facility caters to a specific art discipline, with careful attention given to its design and layout to best support the unique needs of that field.



FILM/PHOTOGRAPHY CLASSROOM



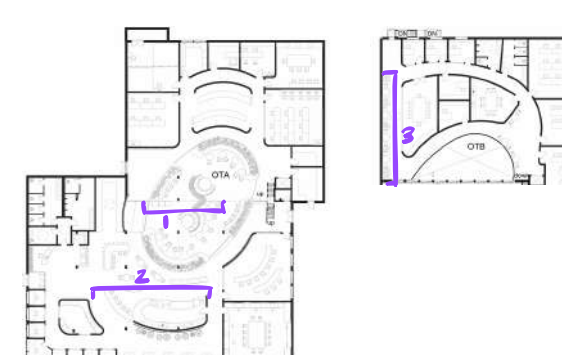
COLLABORATION SPACE ELEVATION



ART STUDIO



PICK-UP CAFE ELEVATION



STUDENT IN-BETWEEN SPACE ELEVATION