

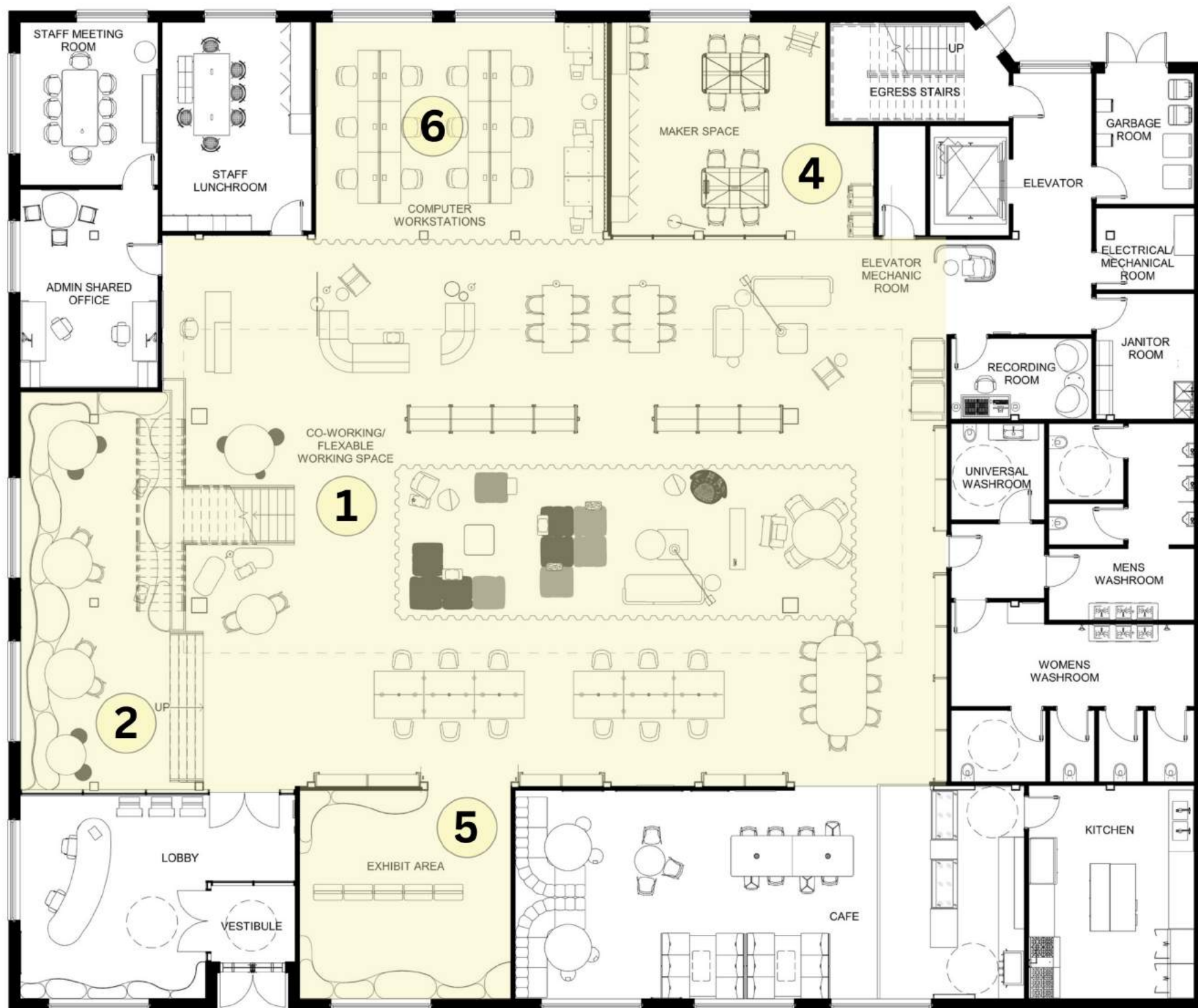
# STUDENT ART LIBRARY

ALEXIS PAPPAS

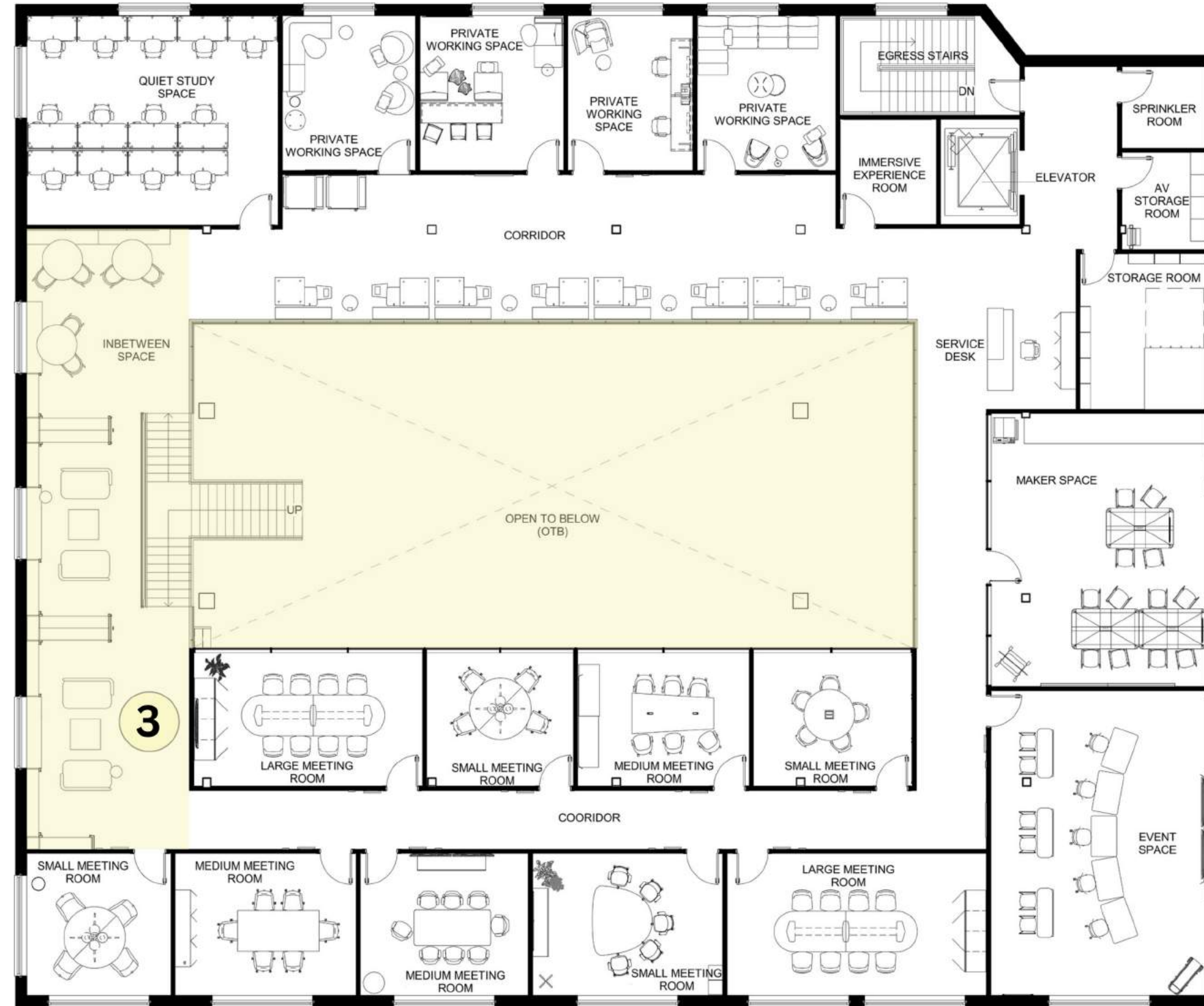


1: CO-WORKING SPACE

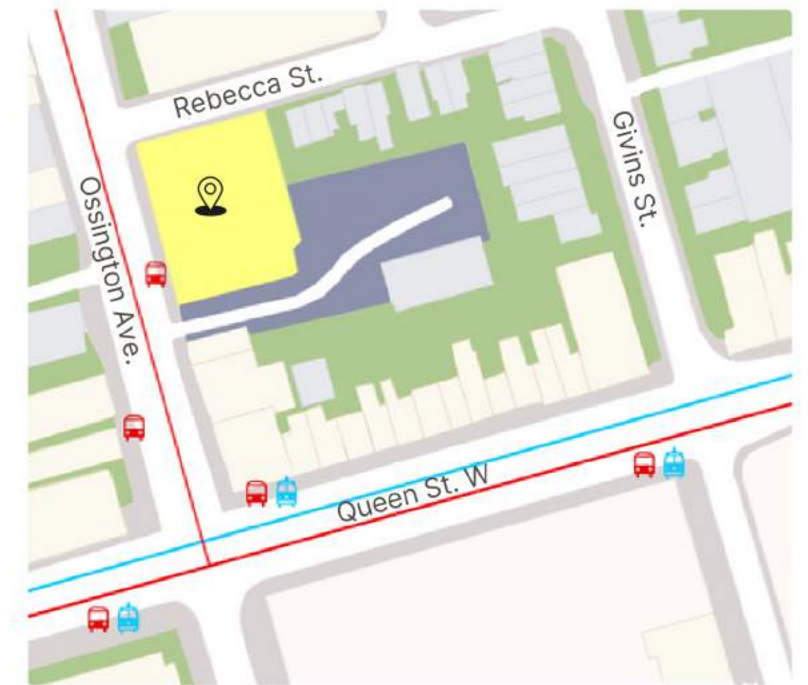
## GROUND FLOOR



## SECOND FLOOR



## LOCATION

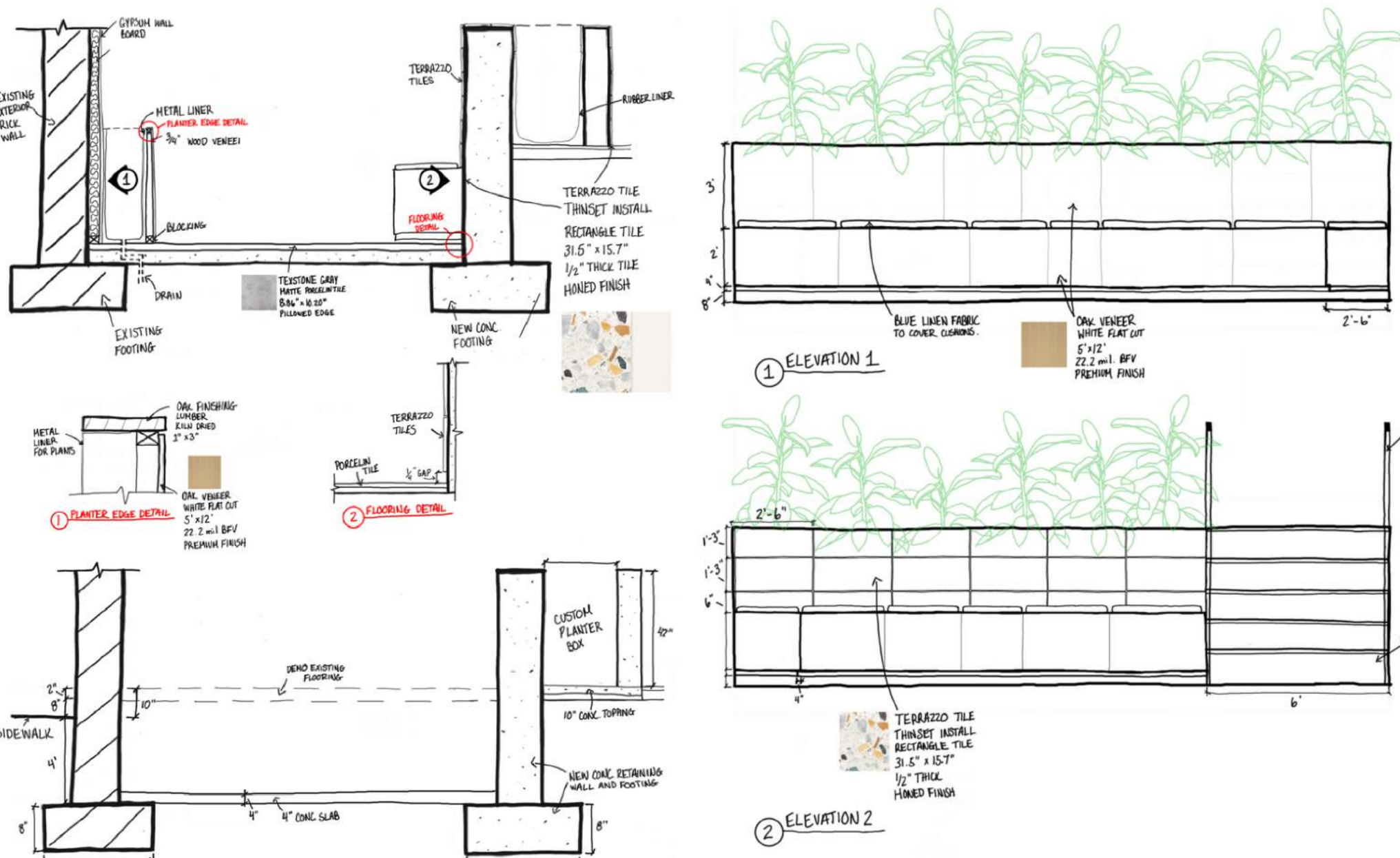


### LEGEND

- Parking Lot
- Street Car Line
- Residential and Commercial
- Bus Line
- Residential
- Focal Area

**21 Ossington Avenue, Toronto, Ontario**  
 This location offers a growing and diverse population, mostly made up of students attending nearby universities and colleges. It is also accessible to all thanks to its many transportation options and street parking.

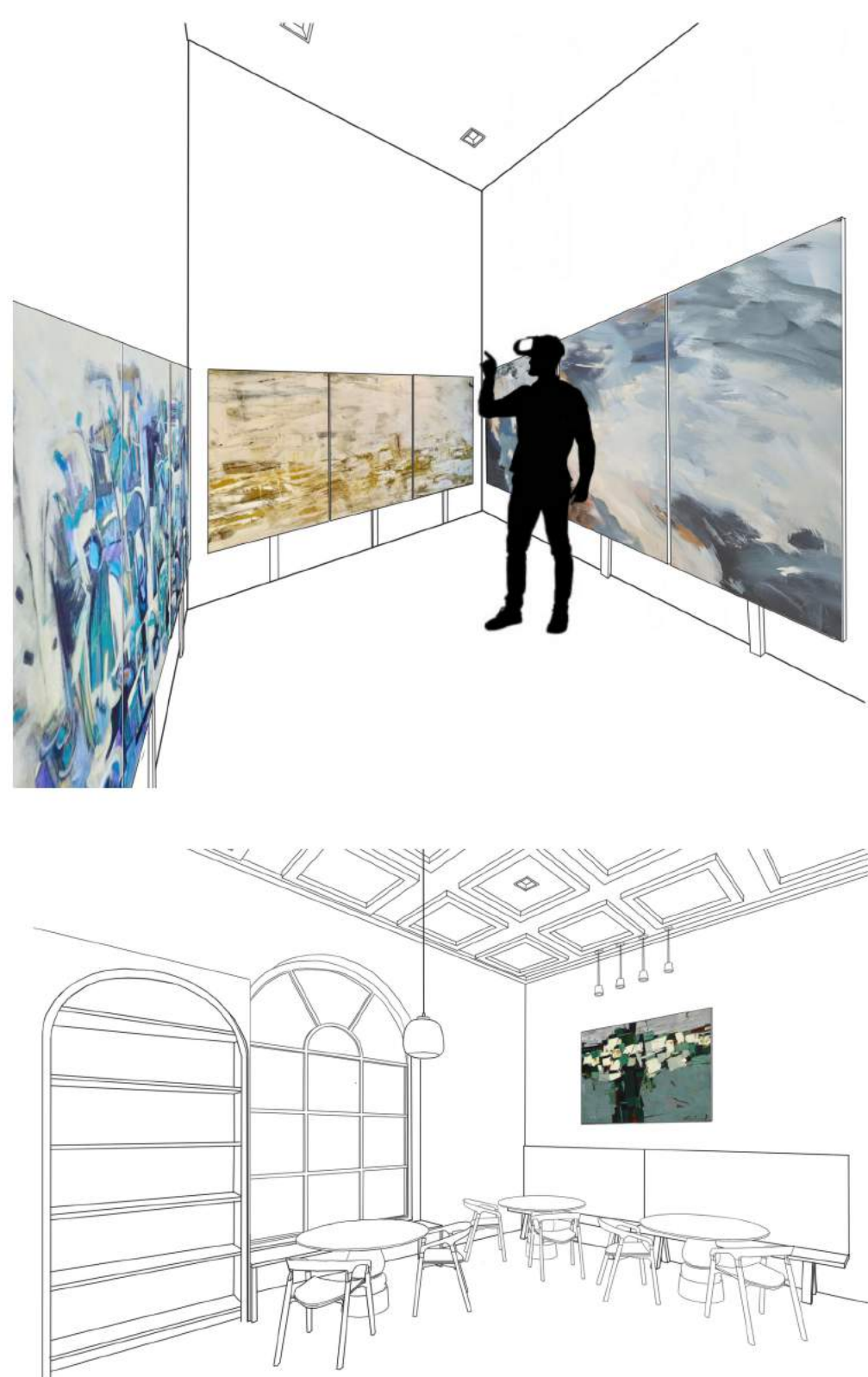
The sunk-in flexible workspace offers a unique environment separate from the main co-working space. This space is a solution to control noise levels and delineate the different working environments in each space. The walls of this space are elegantly lined with curved banquette seating and two variations of planter boxes, one made with terrazzo tile and the other with oak veneer.



2: FLEXIBLE WORKING SPACE

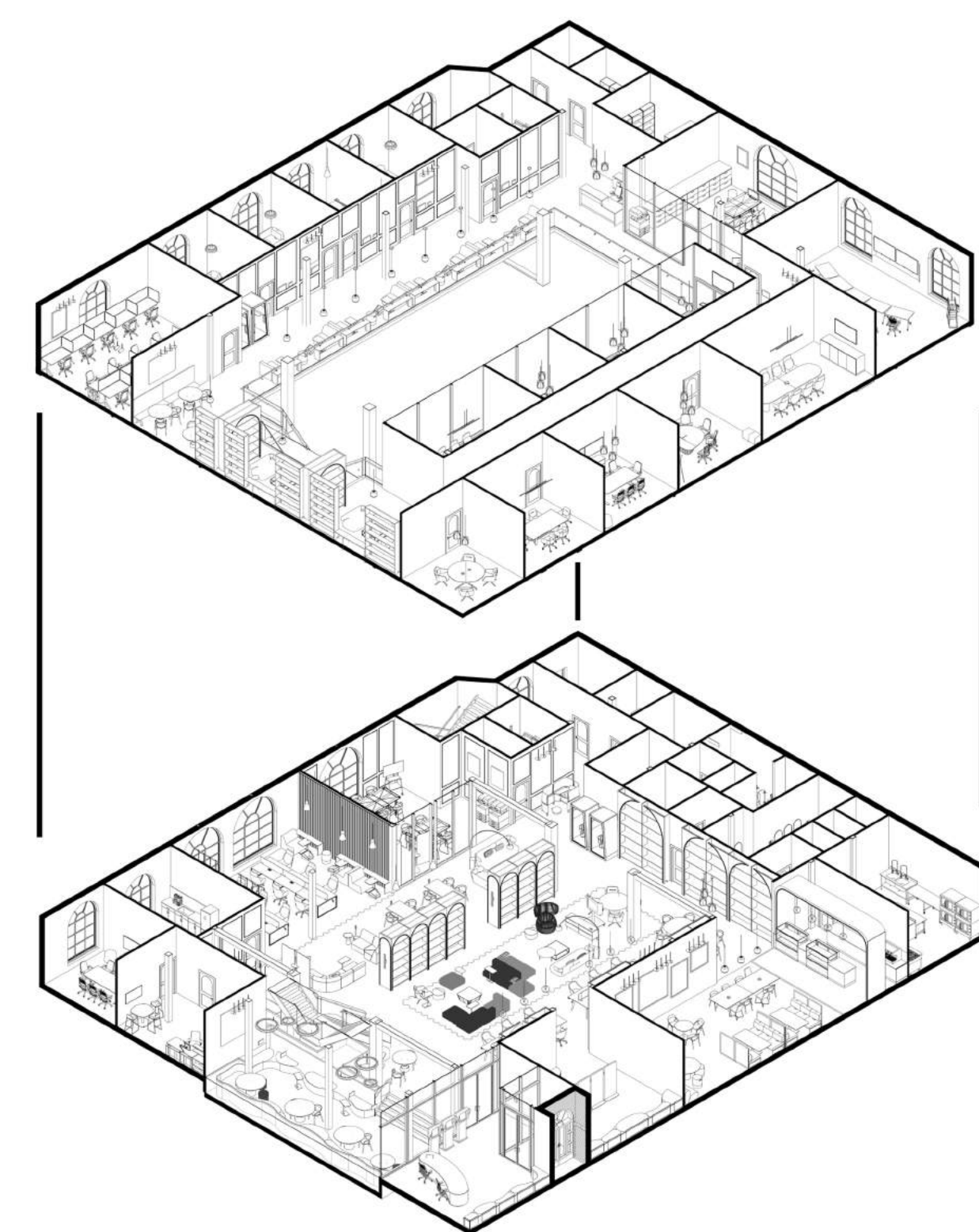


3. IN- BETWEEN READING SPACE

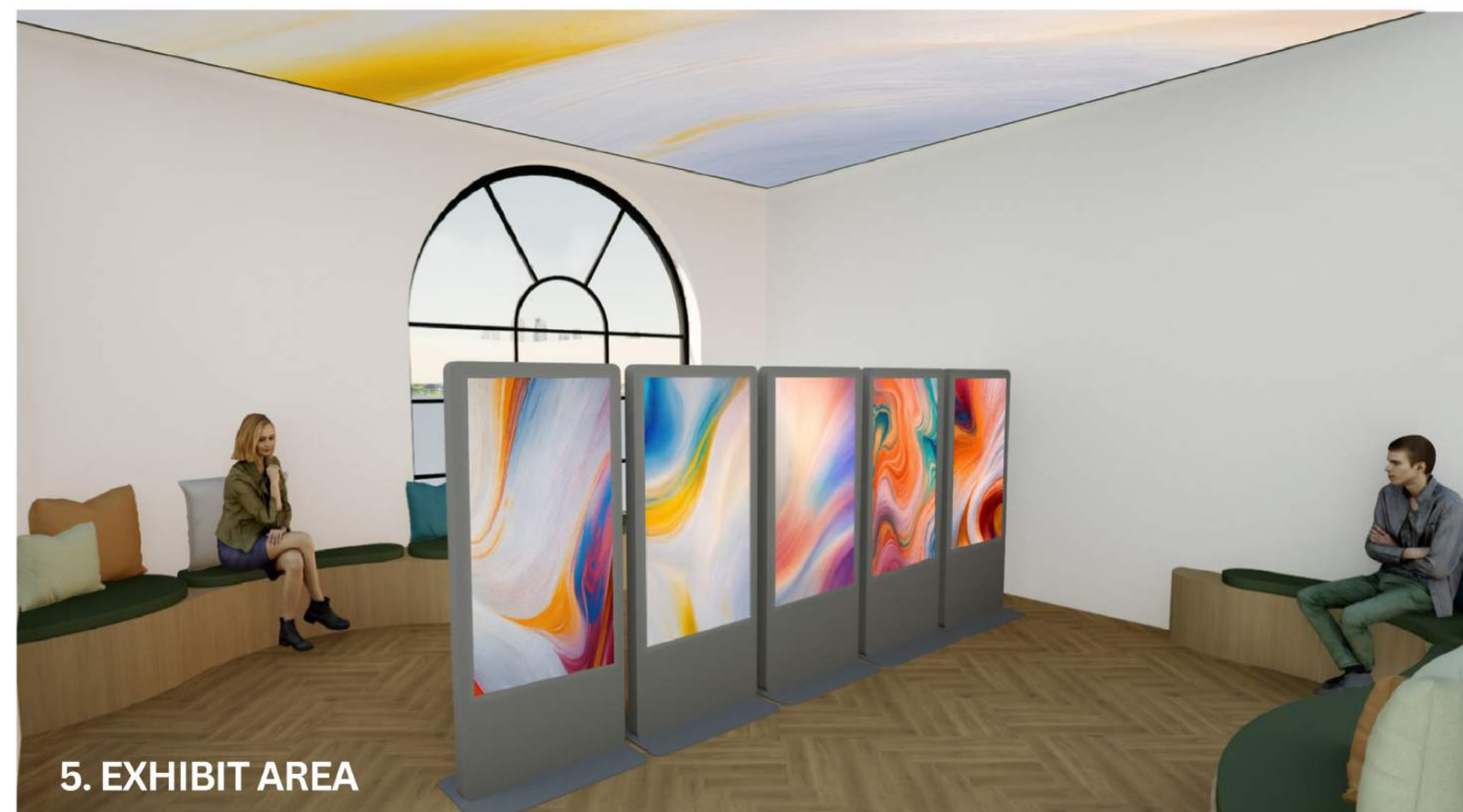


To fulfill the changing educational demands of students, art and technology will be integrated into an art library design that represents the idea of "pushing boundaries." The library is intended to be an active place that encourages innovation, teamwork, and discovery. The library's layout is adaptable to different learning styles and supports various technological needs and artistic expressions through modular furniture.

This multidisciplinary approach encourages students to interact with various artistic materials, preparing them for a future where creativity and innovation are intertwined. Students can gain from an atmosphere that not only retains the richness of traditional art but also embraces the promise of technology by pushing the boundaries in the Art Library's design.



4. MAKER SPACE



5. EXHIBIT AREA



6. COMPUTER WORKSTATIONS