



ENDOCRINOLOGY CLINICAL SPACE

Brittanie Fraser



1: PHARMACY RECEPTION

THE VISION

Within the framework of a design concept for diabetes management, the concept of **fluidity** becomes a guiding principle, drawing inspiration from the **dynamic nature of blood glucose levels** and the intricate functionality of the **Islets of Langerhans**.

The design seeks to embody **adaptability**, much like the islets' responsiveness to **glucose fluctuations**. User interfaces and experiences are crafted with a **fluid design approach**, allowing seamless integration of real-time data, personalized interventions, and user feedback.

The design mirrors the islets' role by creating a **responsive** and **harmonious** system that **intuitively adjusts** to the user's unique needs. It envisions a holistic approach to diabetes care, where the **ebb and flow** of daily life are seamlessly integrated into the design, fostering a sense of **empowerment** and control. Through this **symbiotic relationship** between design and physiological principles, the concept strives to redefine the diabetes management experience, making it not only effective but also intuitively fluid for individuals navigating their health journey.

Conceptual Exploration

Conceptually considering potential avenues in designing around the Islets of Langerhans presented a unique opportunity to merge scientific innovation with architectural creativity, envisioning a space that not only accommodates human needs but also fosters a holistic sense of well-being. Inspired by the intricate cellular structure of these pancreatic islets, the design concept revolves around the principles of harmony, adaptability, and regeneration.





2: PATIENT WAITING AREA



3: THERAPY SPACE



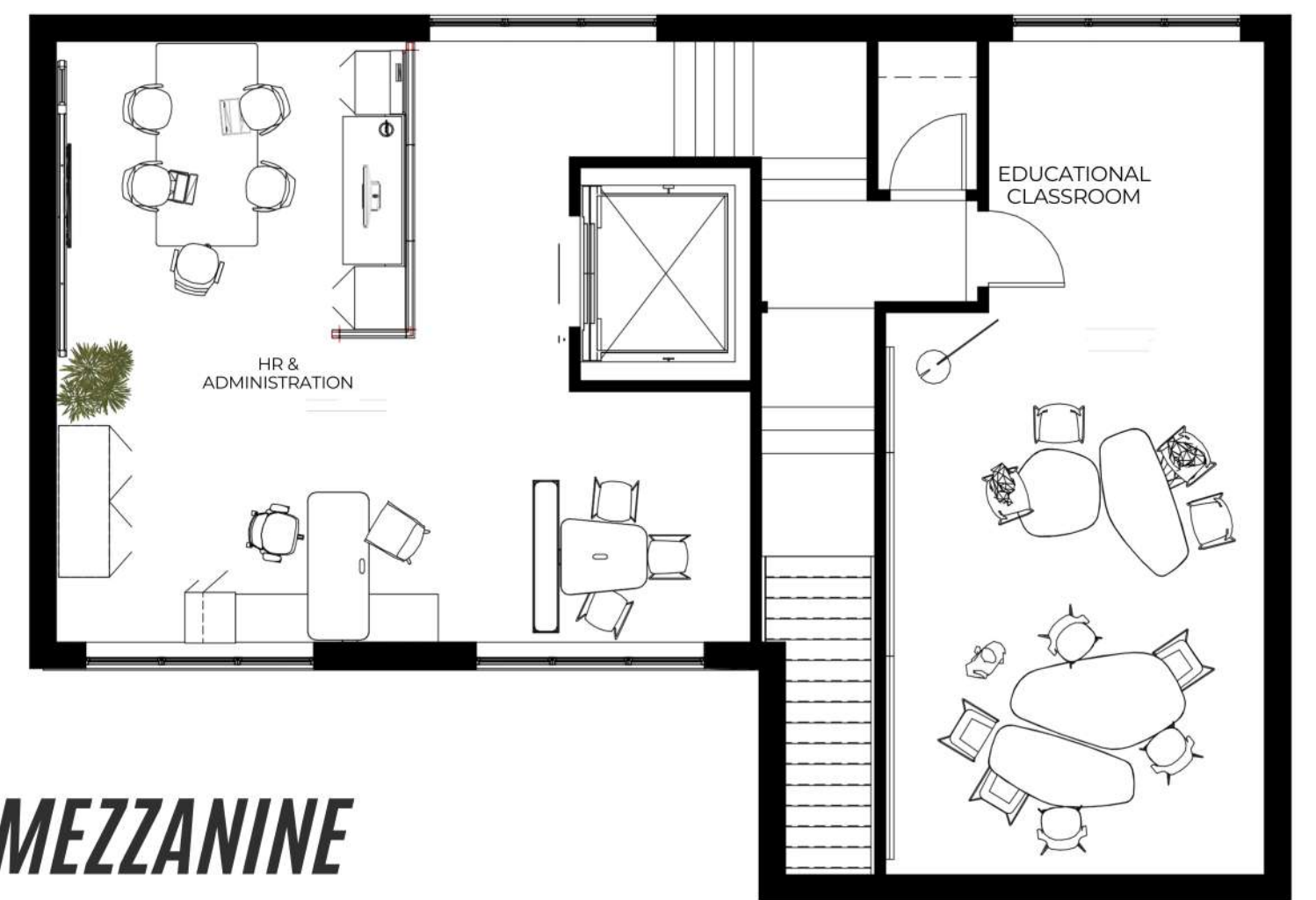
4: EDUCATIONAL KITCHEN



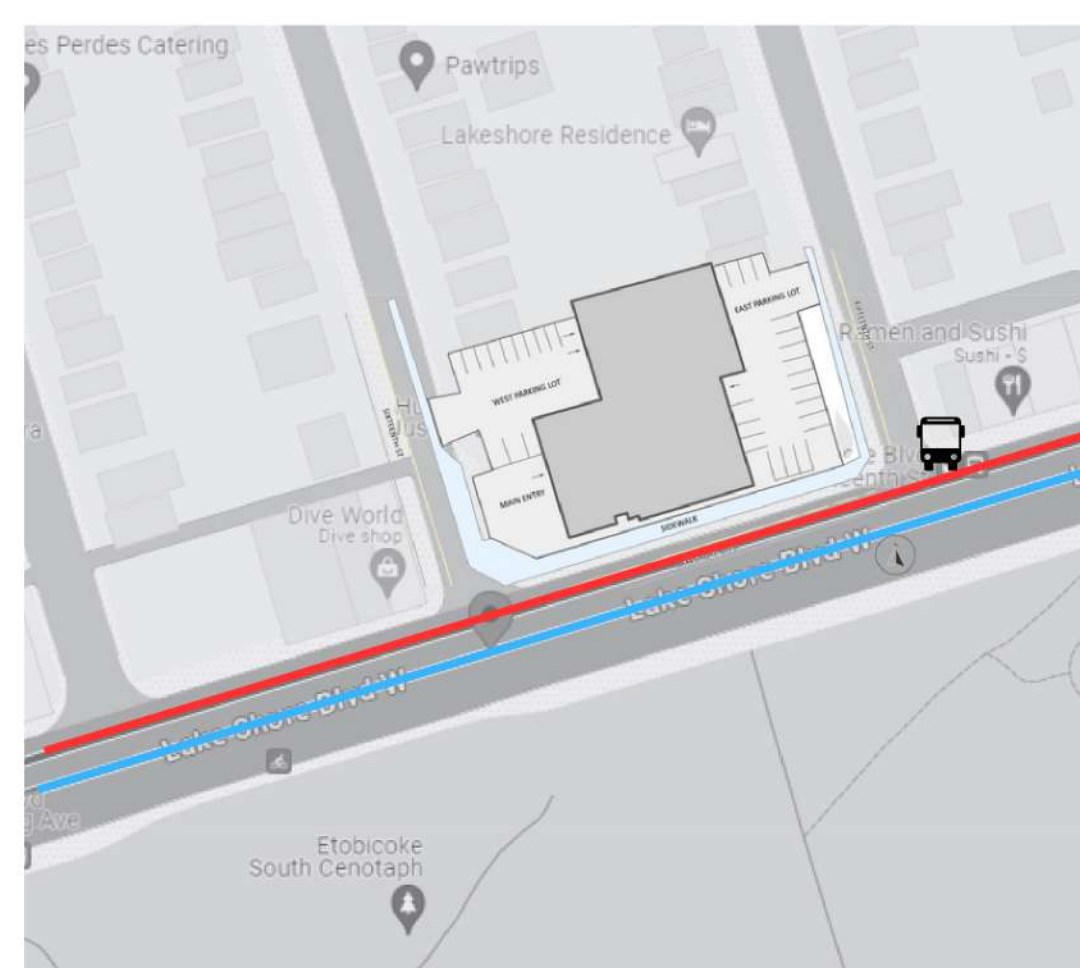
MAIN FLOOR



UPPER MEZZANINE



LOCATION



3120 Lakeshore was chosen as the space best reflected the relaxed neighborhood, as the sounding area is mainly residential with Humber College across the street . Providing a focus on care, without the bustling city distracting or making the patient or other users feel comfortable.