

www.elijah-design.com

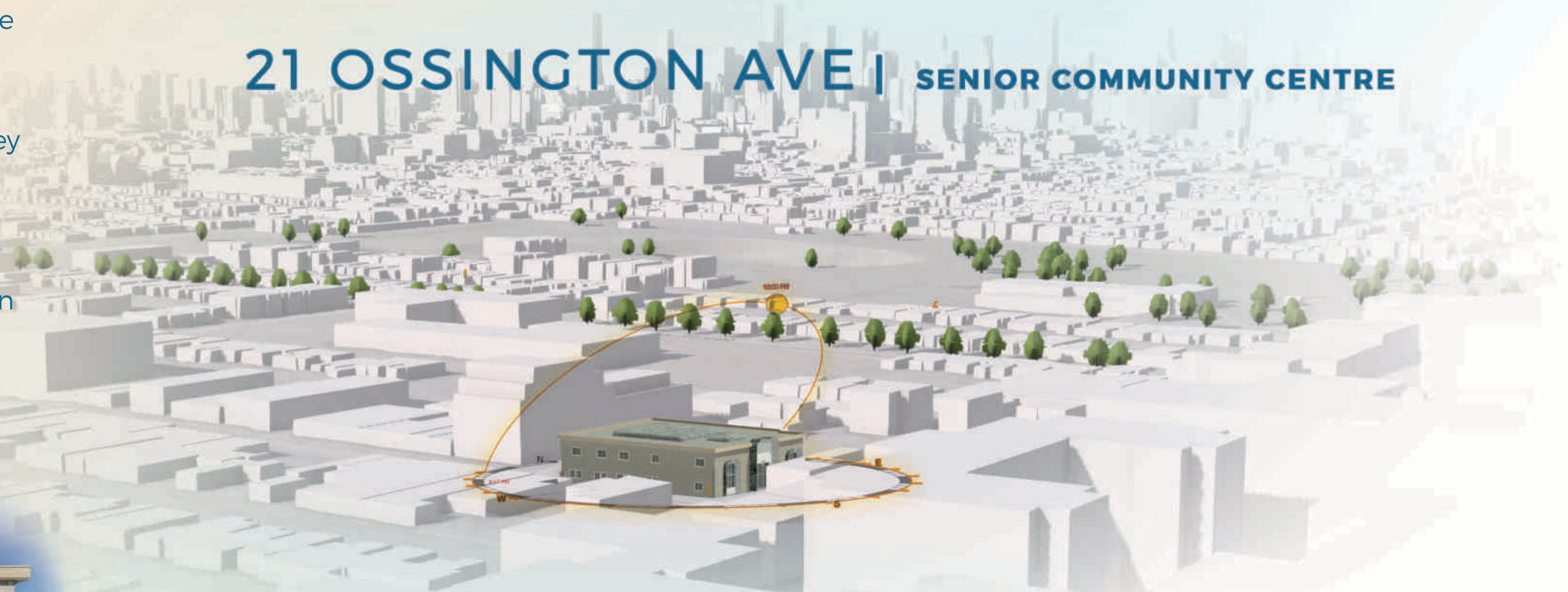


SENIOR COMMUNITY CENTRE

ELIJAH ALEJANDRO

The thesis project revolves around the development of a senior community center, drawing inspiration from personal experiences, notably the journey of the designer's mother. The study recognizes the paramount importance of Aging in the Right Place (AIRP) and is determined to create an enriching space tailored specifically for Naturally Occurring Retirement Communities (NORCs).

21 OSSINGTON AVE | SENIOR COMMUNITY CENTRE



Through strategic integration of cutting-edge technology, the project design aims to simplify administrative tasks, enabling staff to focus on fostering meaningful human connections within the NORC setting. This social building stands as a to addressing societal needs through innovative design solutions, with a strong emphasis on enhancing the quality of life for seniors.

CON·TRAST

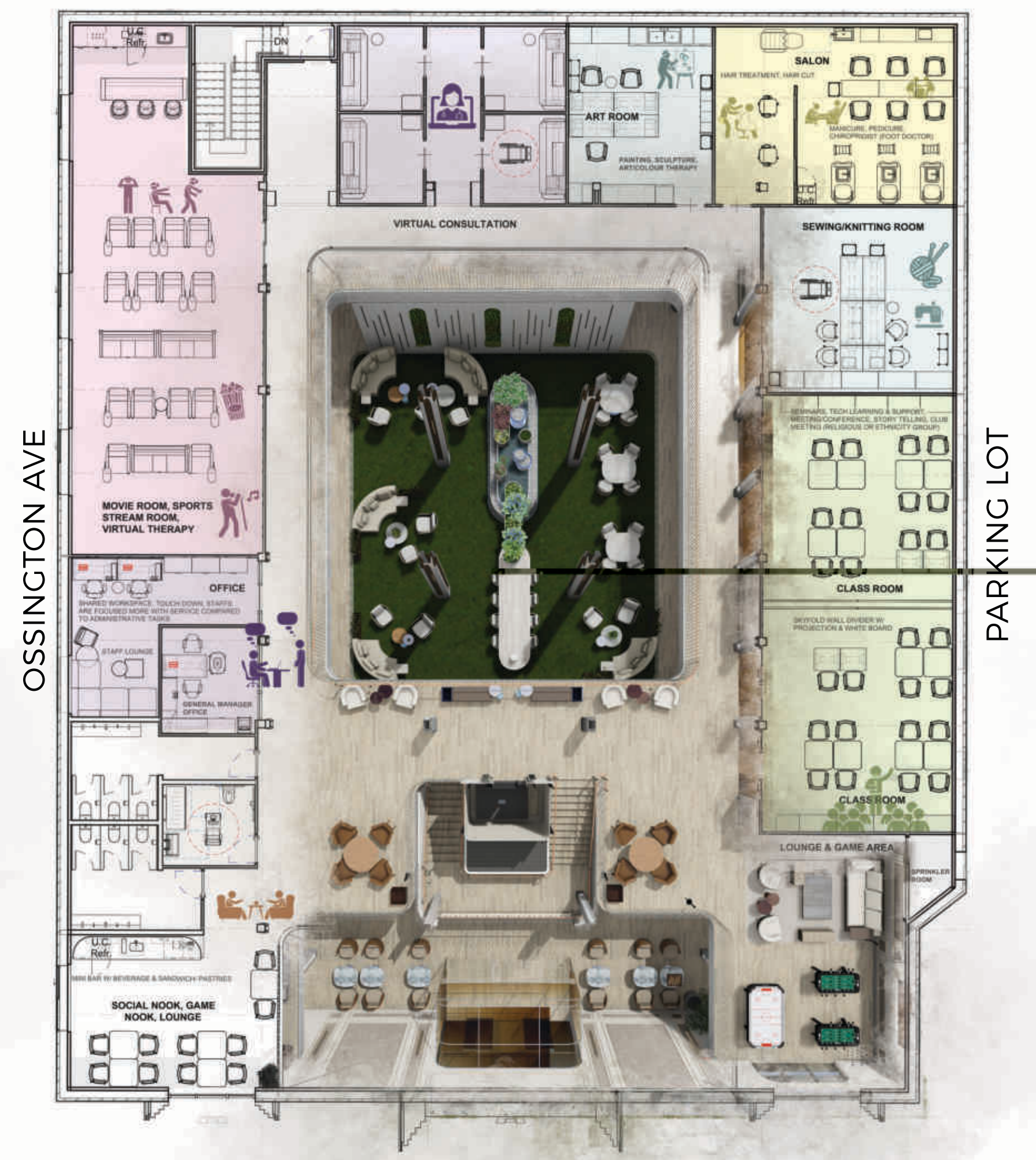
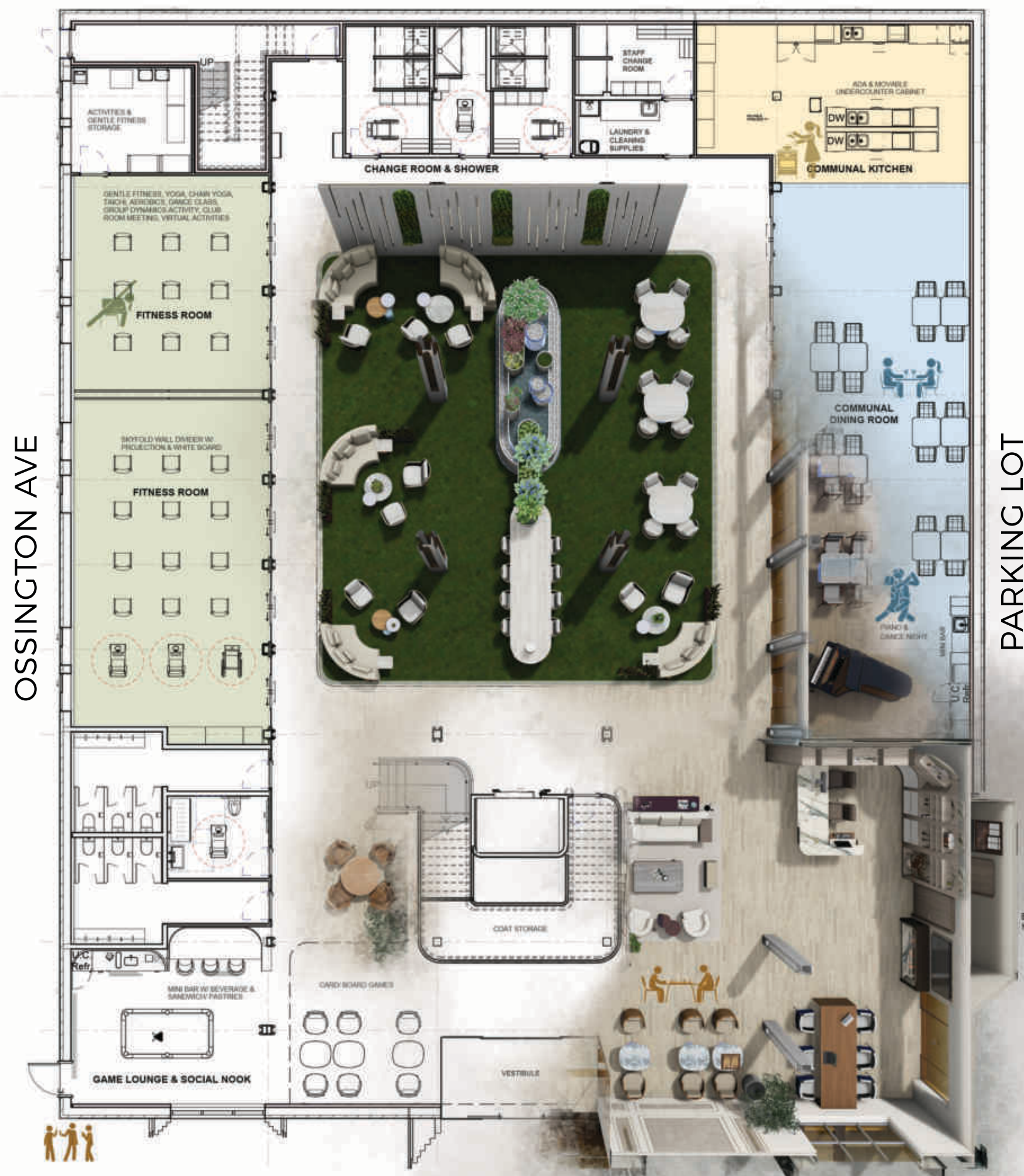
Noun /'kən, trast/

the state of being strikingly different from something else in juxtaposition or close association.



REBECCA ST

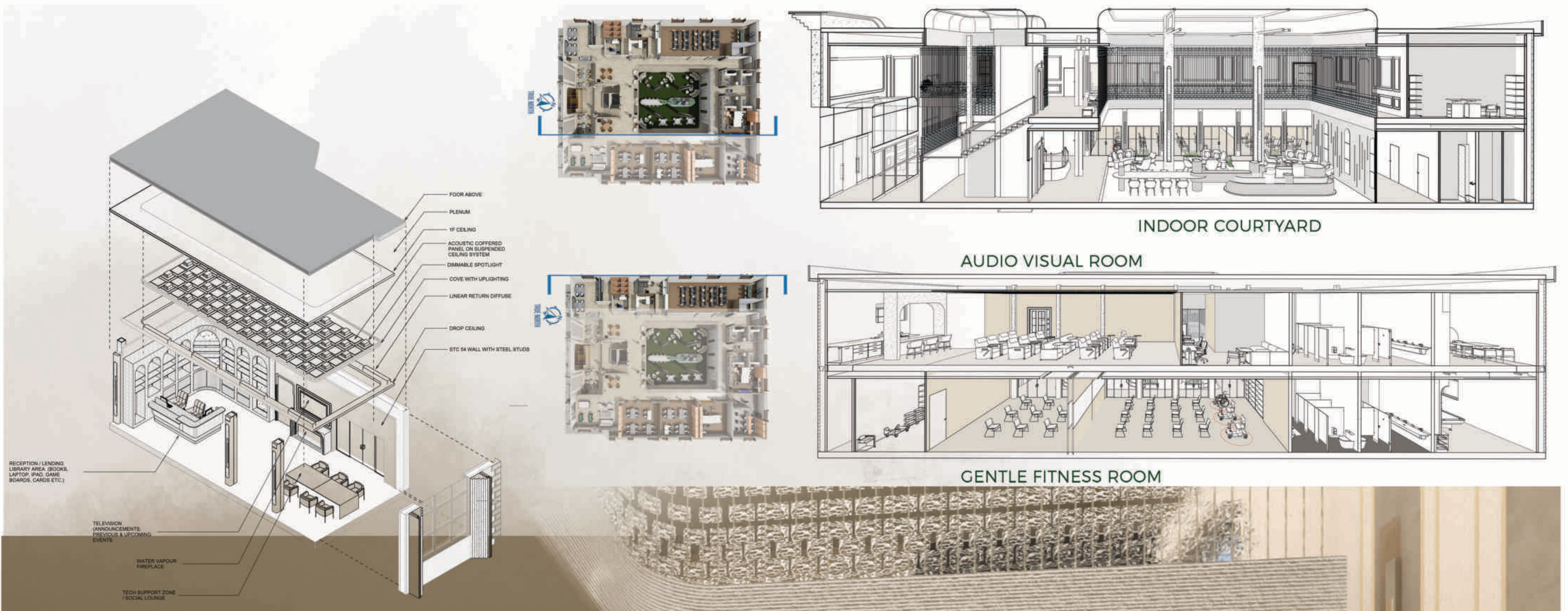
REBECCA ST



FIRST FLOOR



SECOND FLOOR



MATERIAL FINISHES

