



TRINITY HOTEL

LIAN DOMINGO

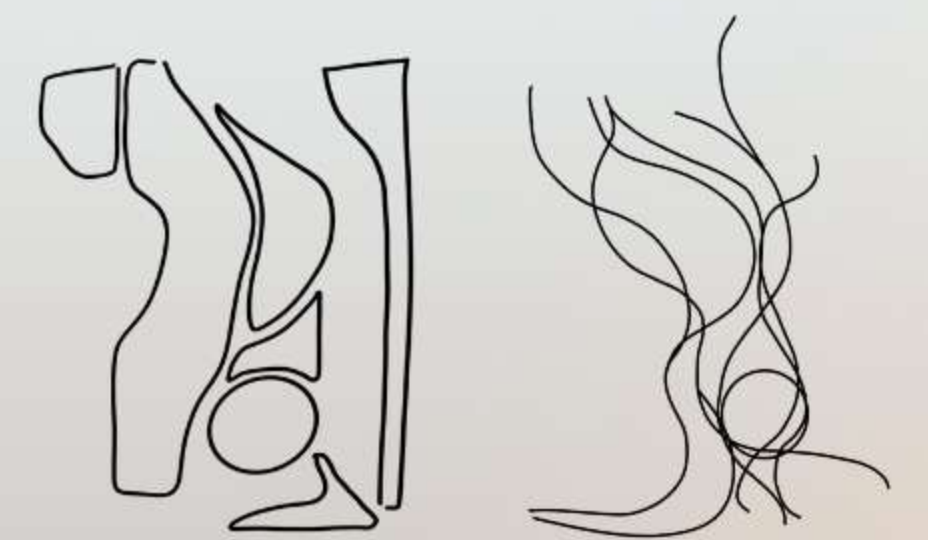


THE TRINITY HOTEL

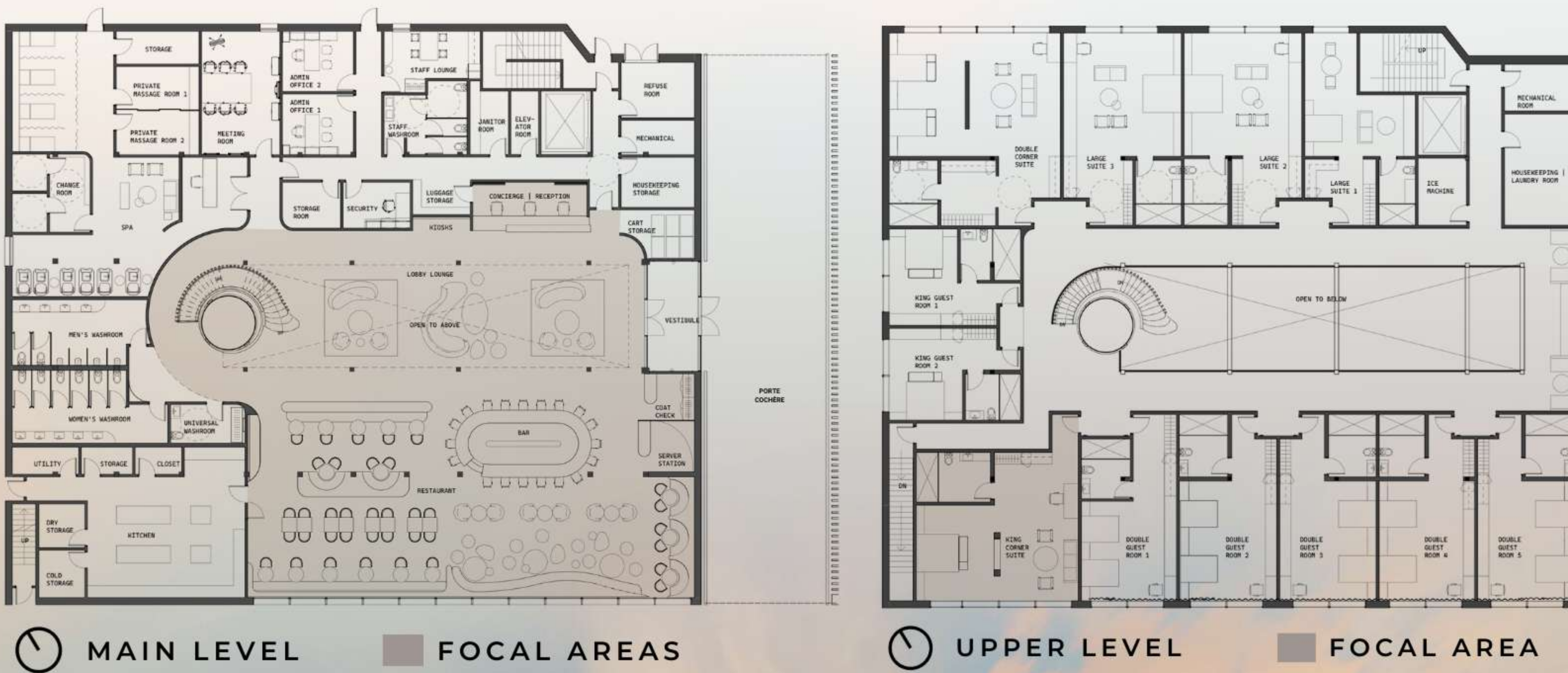


21 Ossington | Toronto, Ontario

Drawing inspiration from Trinity Bellwoods Park's ability to create meaningful connections, the hotel design focuses on the notion of encounters to symbolize the harmonious coexistence between local residents and visitors. It represents the dynamic interplay of diverse individuals coming together within a space designed to facilitate connections and mutual learning.



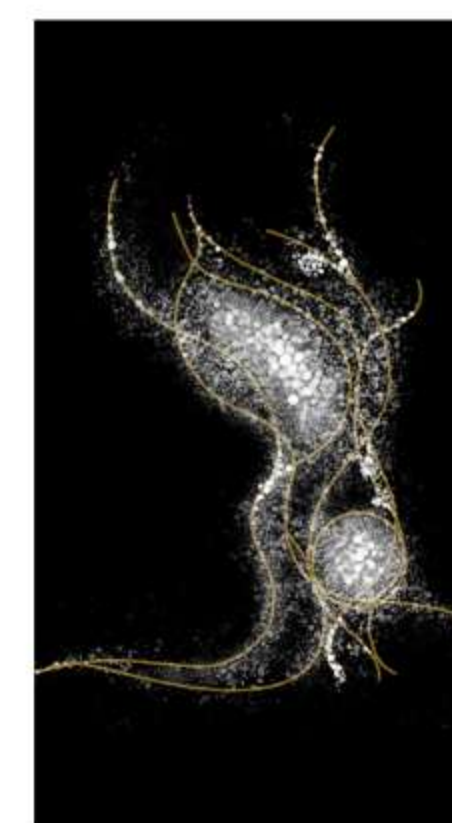
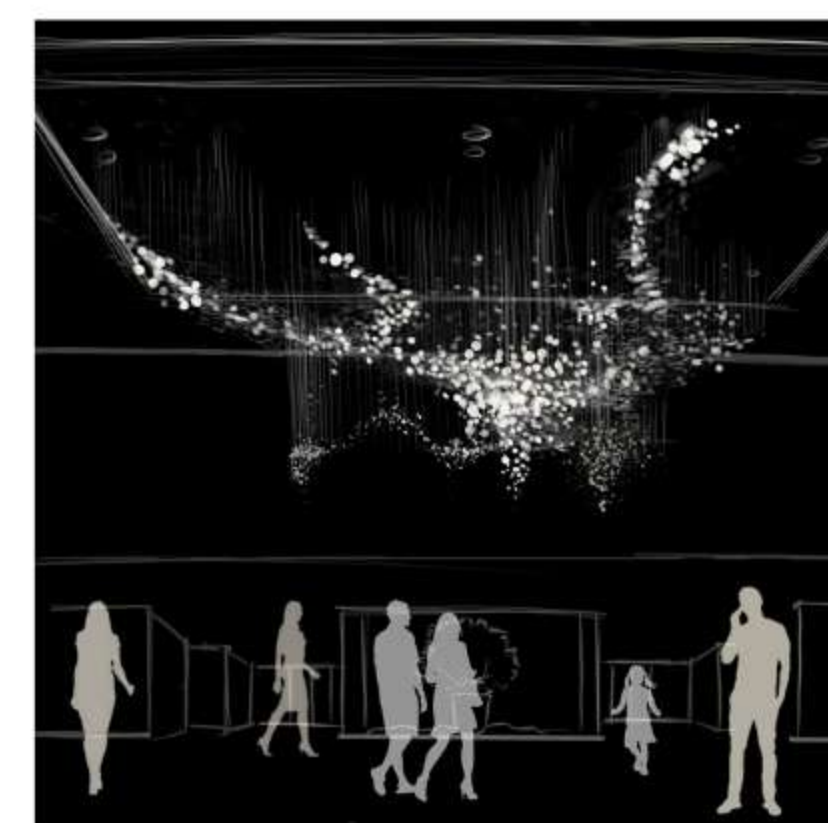
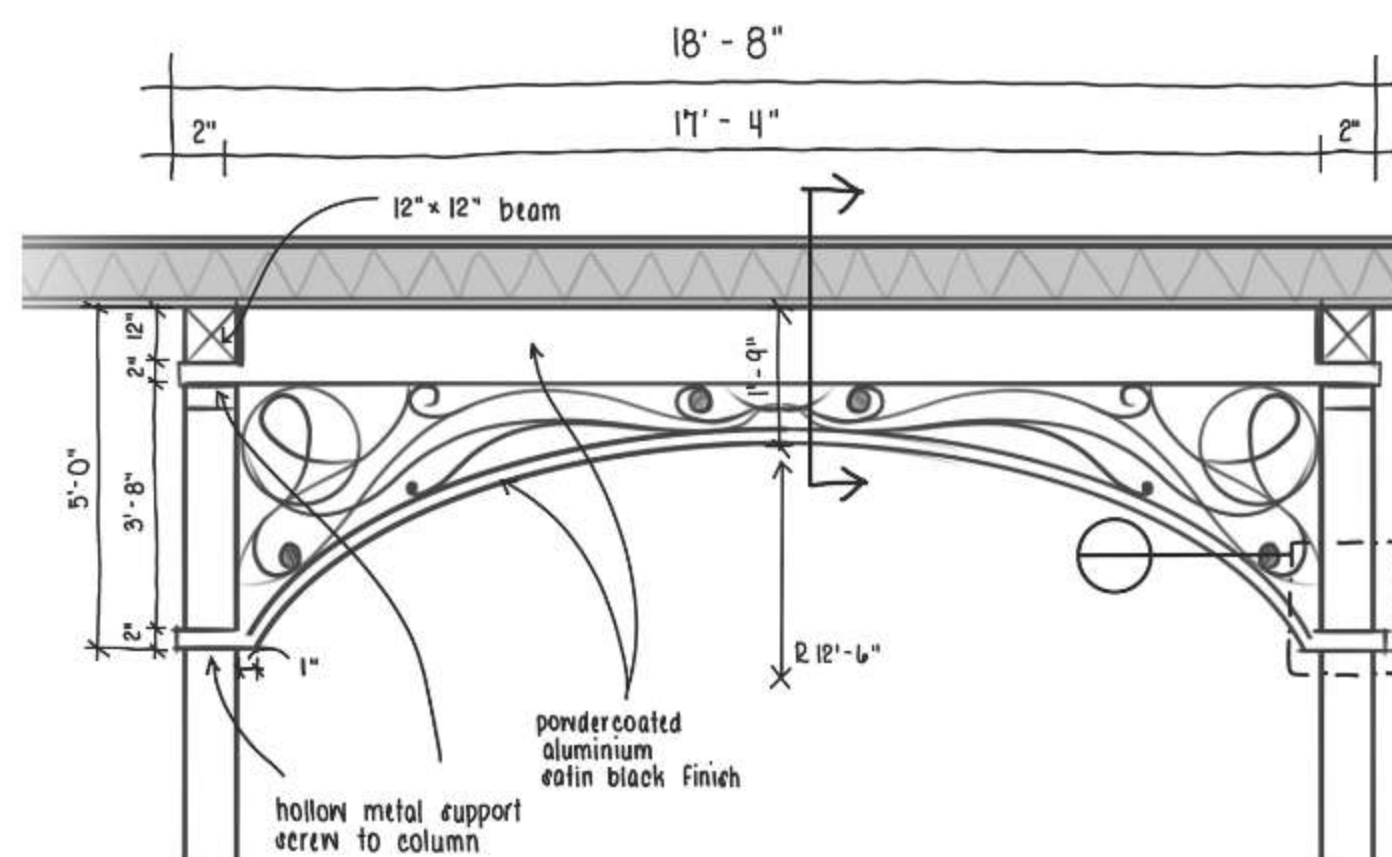
The parti takes inspiration from the pathways within Trinity Bellwoods Park. These pathways not only represent the physical structure of the community but also symbolize the interactions that shape it. The concept is explored through various ways, including the arrangement of trees within the park and the organic curves of the pathways. The approach of utilizing the paths found in the local surroundings further emphasizes the integration of the local identity into the design.





THE SUITES

The suites epitomize luxury and relaxation by seamlessly blending natural materials with cutting-edge technology. Guests can customize their experience by adjusting lighting levels to suit their preferences, all while enjoying versatile spaces designed for work, leisure, or rejuvenation. With a harmonious fusion of modern amenities and organic elements, the suites offer a haven where guests can indulge in comfort and convenience amidst a tranquil atmosphere.



THE ARCHED GATE DETAIL

The arches in the lobby serve as a symbolic homage to Trinity Bellwoods, mirroring the welcoming gates that greet visitors to the park. These architectural elements not only pay tribute to the surrounding environment but also evoke a sense of entry and transition, inviting guests into a space where they can unwind and immerse themselves in the serene ambiance of their surroundings.

THE CRYSTAL MAP

The central feature of the lobby acts as both a decorative element and a narrative driver. The crystal map's design draws inspiration from the pathways of Trinity Bellwoods Park, symbolizing the journey that leads guests to 21 Ossington. By integrating this geographical motif into the lobby's design, it not only adds visual intrigue but also reinforces the connection between the hotel and its surrounding environment, enriching the guest experience with a deeper sense of place and storytelling.



BUILDING SECTION | EAST — WEST



THE STONE GARDEN

The Stone Garden Lounge and Restaurant achieves the feeling of being at the park through meticulous attention to detail in its design and ambiance. With its 'stone-filled' lounge area and abundant greenery, guests are instantly transported to the tranquility of relaxing at the park on a summer day. The natural elements, such as wooden furnishings and earthy textures, further enhance this sensation, while the gentle sway of the ceiling mimicking the wind adds a subtle touch of realism. Combined with comfortable seating arrangements that encourage relaxation and socialization, the overall experience creates an immersive environment where visitors can truly feel as though they are lounging in the midst of nature's beauty.