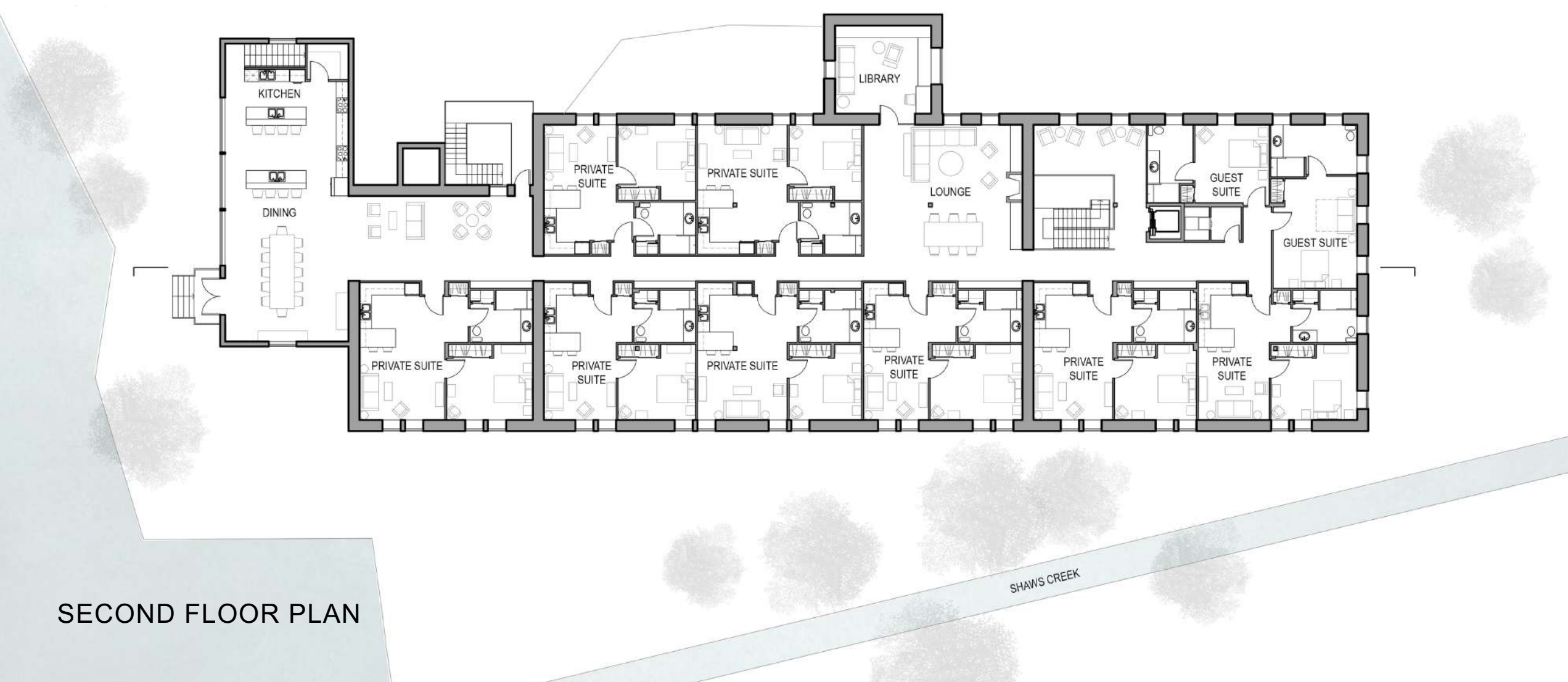
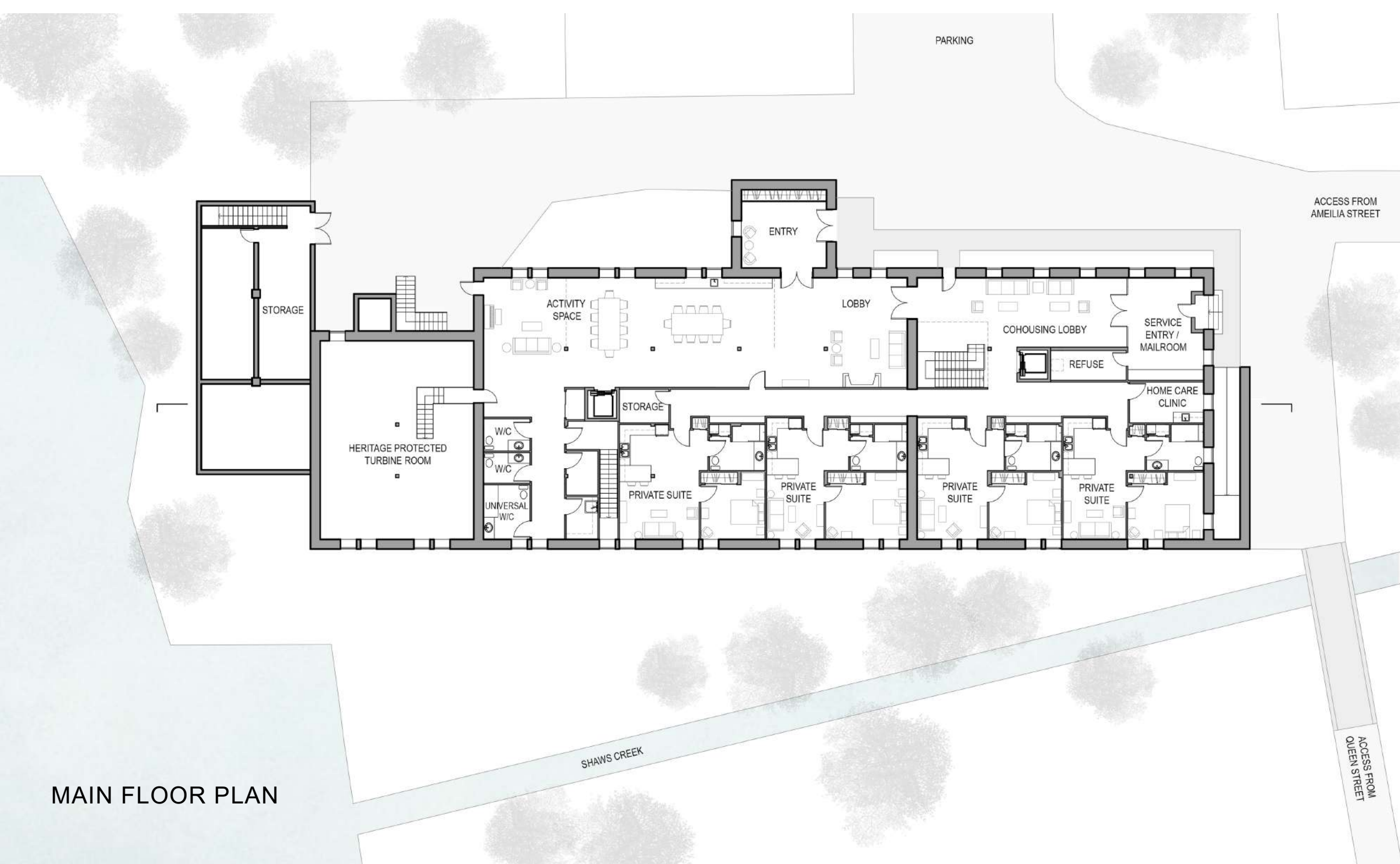


ALTON MILL MEN'S SENIOR CO-HOUSING

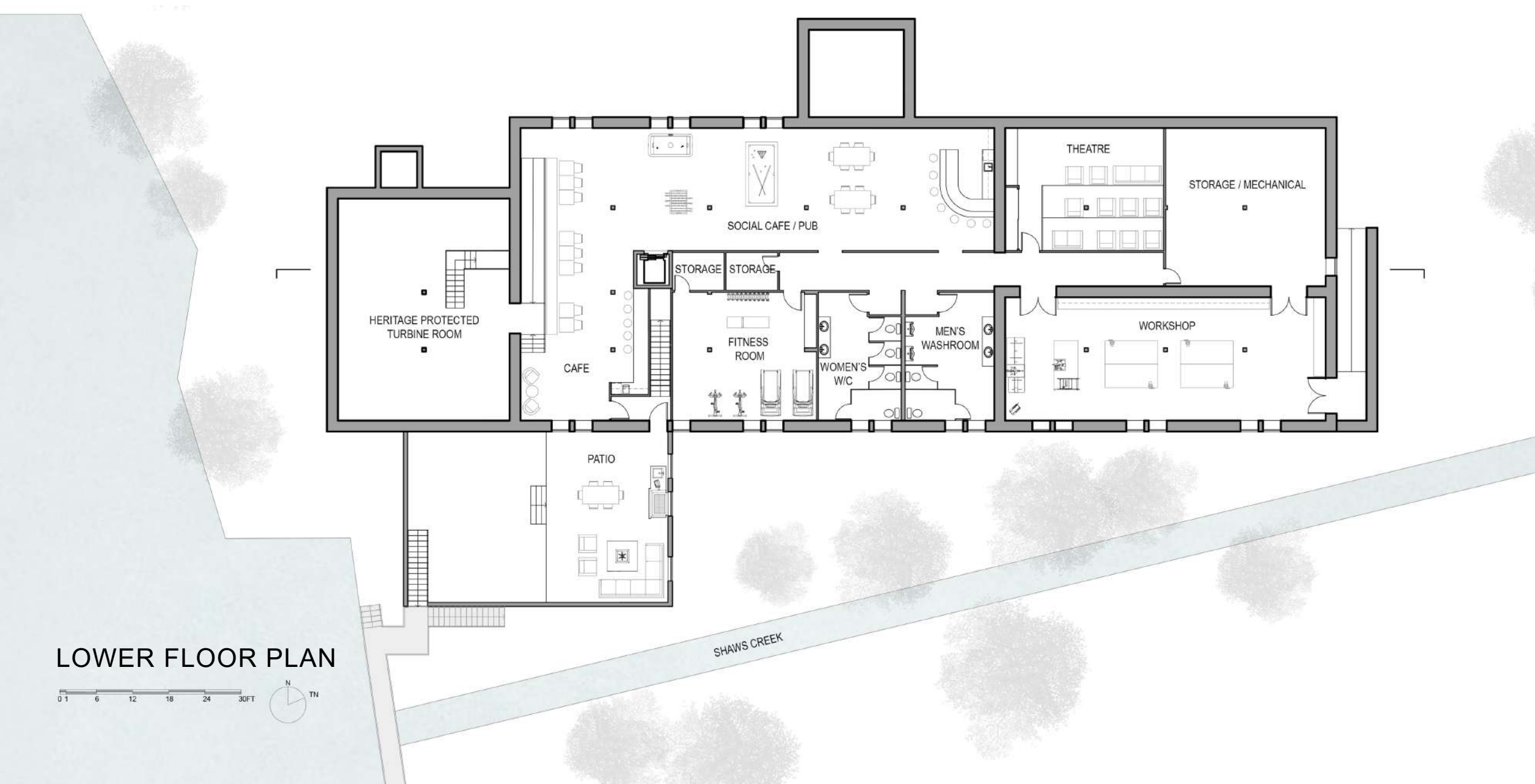
LORA BARBER



SECOND FLOOR PLAN



MAIN FLOOR PLAN



LOWER FLOOR PLAN

THE IDEA

Alton Mill Men's Senior Cohousing is an evidence-based and adaptive reuse design project proposed to repurpose the historic Beaver Knitting Mill site at 1402 Queen Street, Alton, Ontario, into a cohousing community for senior widowed men.

This project addresses current gaps in local senior cohousing communities that are exclusive to female or married seniors and is dedicated to promoting safety, socialization, independence and autonomy to support overall user well-being.

The design features 12 universally designed private suites and thoughtfully curated, shared spaces catering to senior men's needs and interests. It also accommodates programs to teach new skills for healthy, independent living.

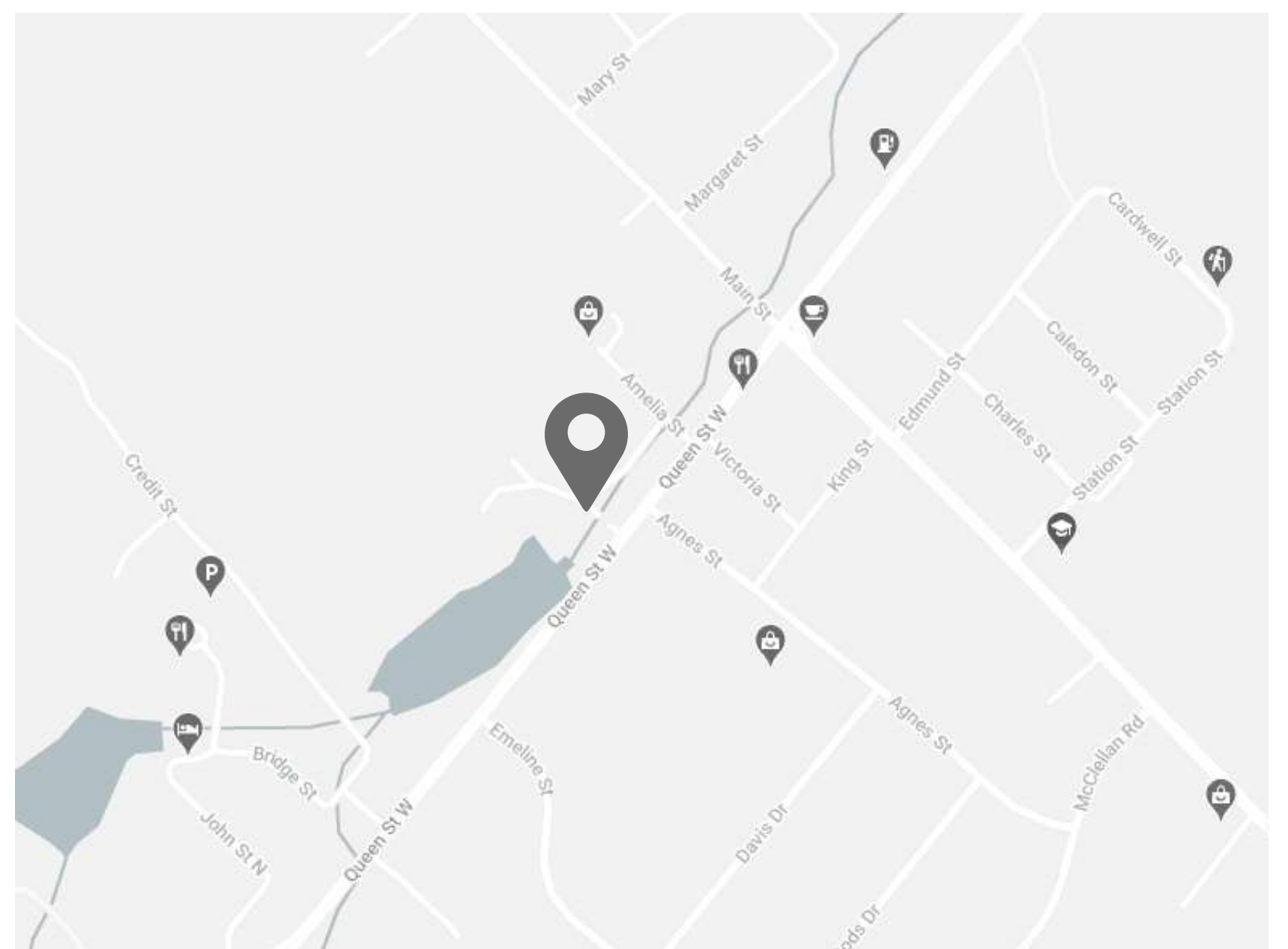
By integrating place attachment theory principles, the design can create a stronger connection between person and place to create a home-like space. Place attachment theory is essential for developing autonomy, belonging and identity for seniors.

RESEARCH FINDINGS

Through analysis of precedent research and interviews with senior living designers, recreational therapists and enrichment directors in senior living communities, key findings that would support the success of the design were identified:

- Spaces that encourage socialization and support various activities such as games, music, woodworking and gardening.
- Opportunities for programs to encourage healthy living including cooking classes, fitness or stretching classes.
- Flexibility in spaces with modular furniture to accommodate a range of activities to support different resident needs and interests.
- Opportunities to engage the broader community with activities happening within the community.
- Developing a welcoming environment for friends and family when visiting.
- Barrier-free design that accommodates all resident's needs to allow safe aging in place.

LOCATION:

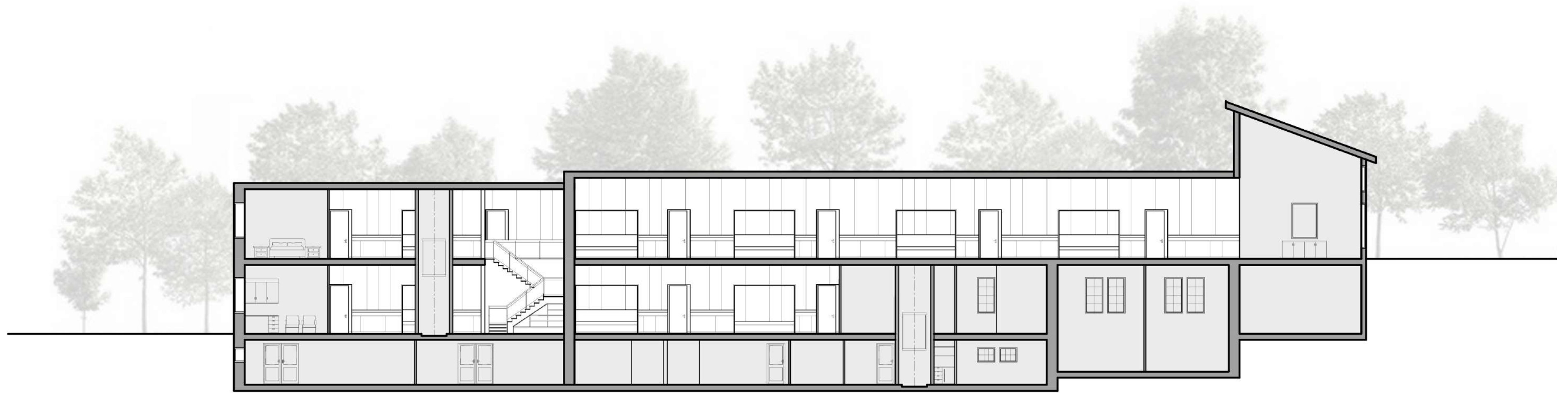
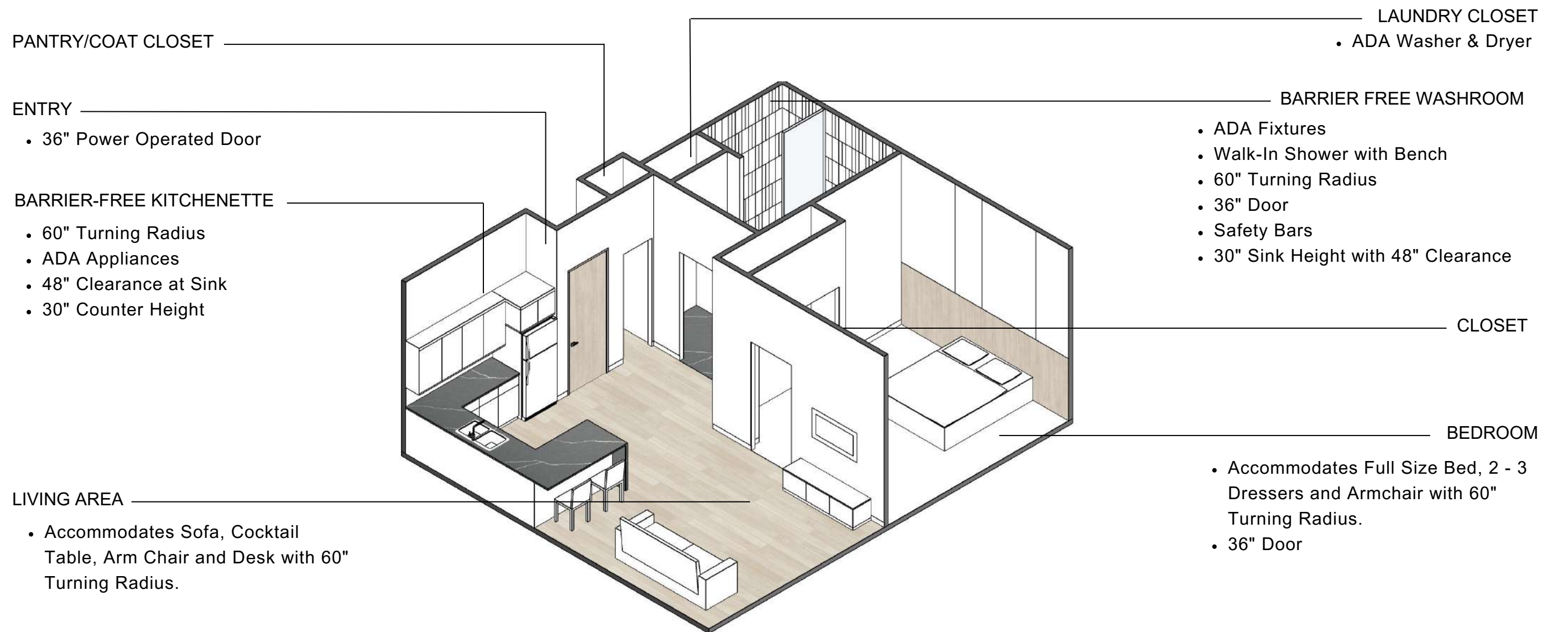
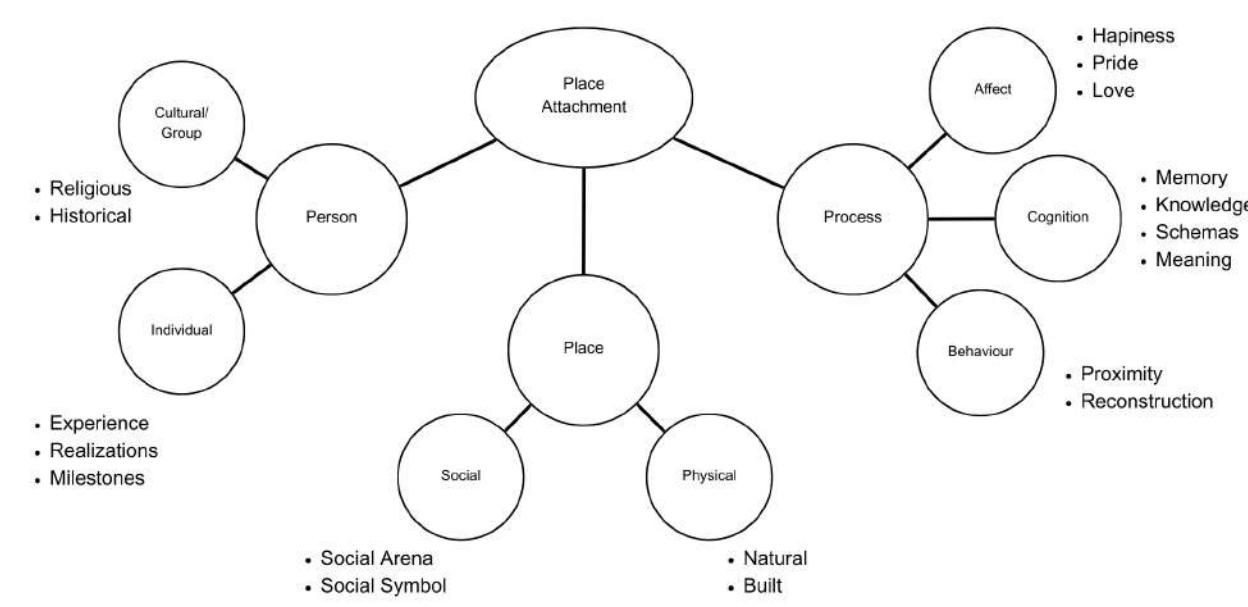
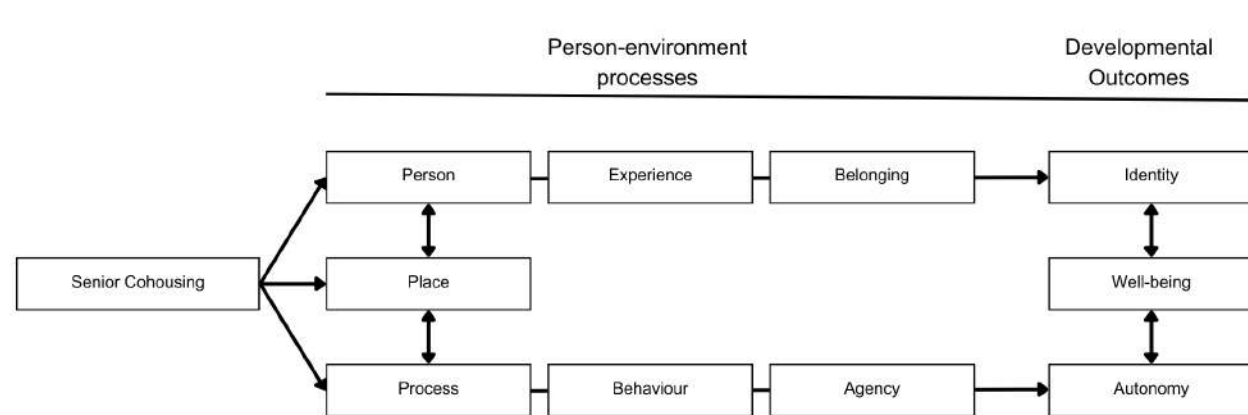
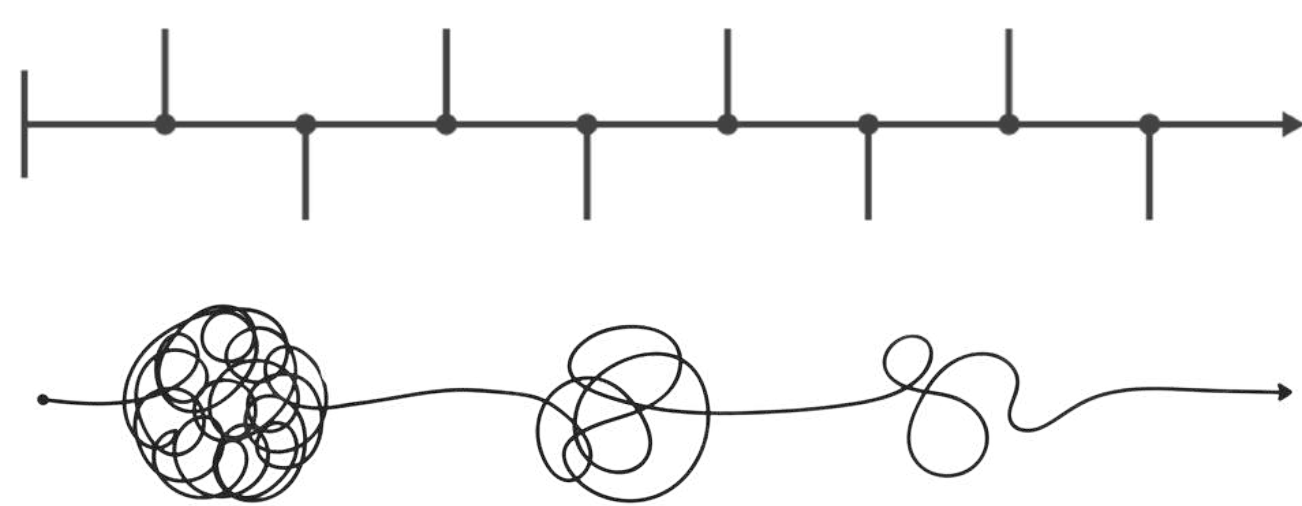




CONCEPTUAL APPROACH

The design concept is inspired by the shared experiences of loss and aging of residents living within the cohousing community and the importance of memory in mourning loss and creating a sense of place. Linear repetitive spatial qualities imitate moments in time that comprise memory, like events on a timeline, while contrasting unravelling design elements and textiles selected from the history of the building demonstrate how memories develop, change and fade overtime.

TYPICAL SUITE LAYOUT



BUILDING SECTION
0 1 6 12 18 24 30FT

