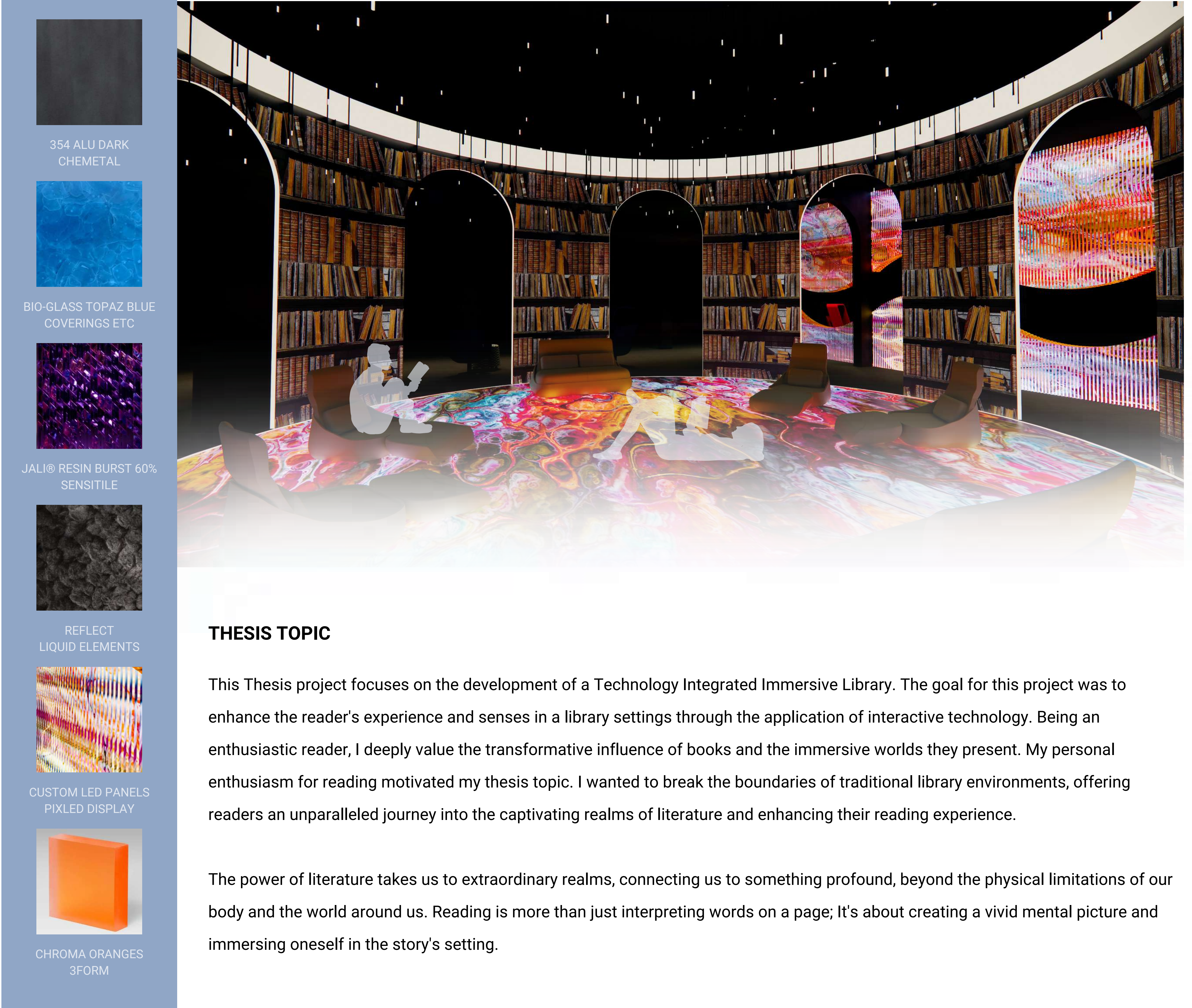




BEYOND: TECHNOLOGY INTEGRATED IMMERSIVE LIBRARY

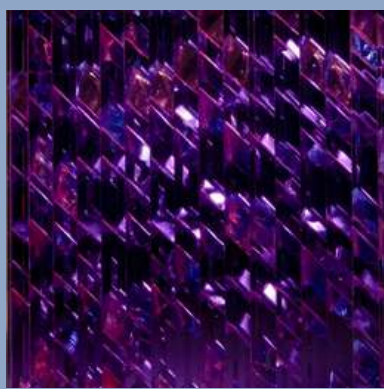
SABA MODARESI



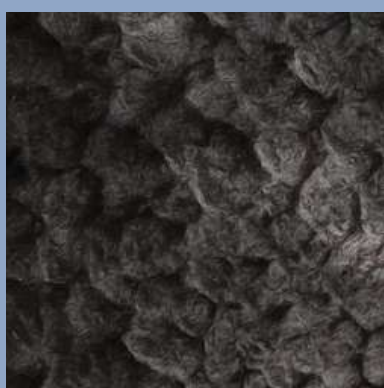
354 ALU DARK
CHEMETAL



BIO-GLASS TOPAZ BLUE
COVERINGS ETC



JALI® RESIN BURST 60%
SENSITILE



REFLECT
LIQUID ELEMENTS



CUSTOM LED PANELS
PIXLED DISPLAY

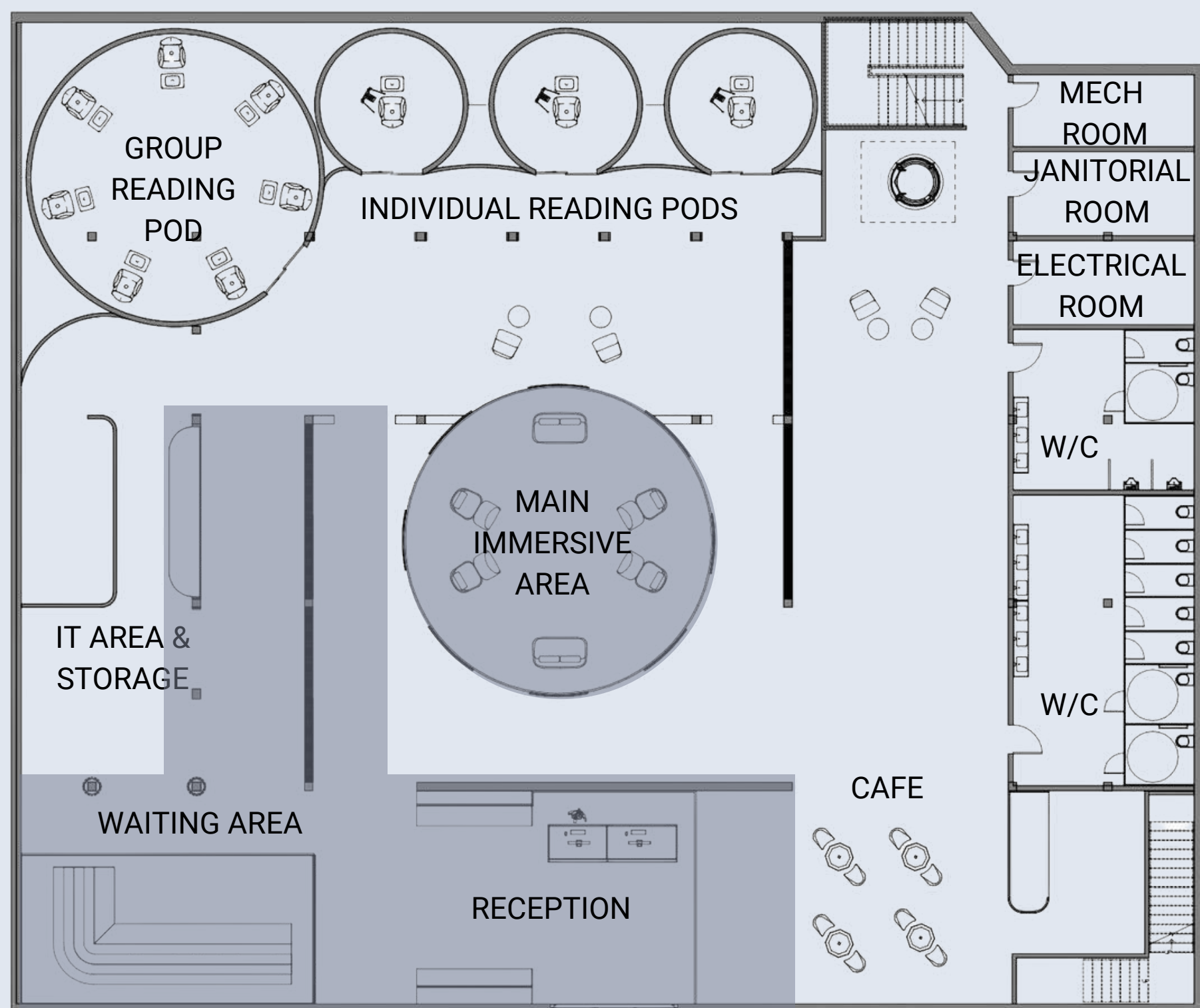


CHROMA ORANGES
3FORM

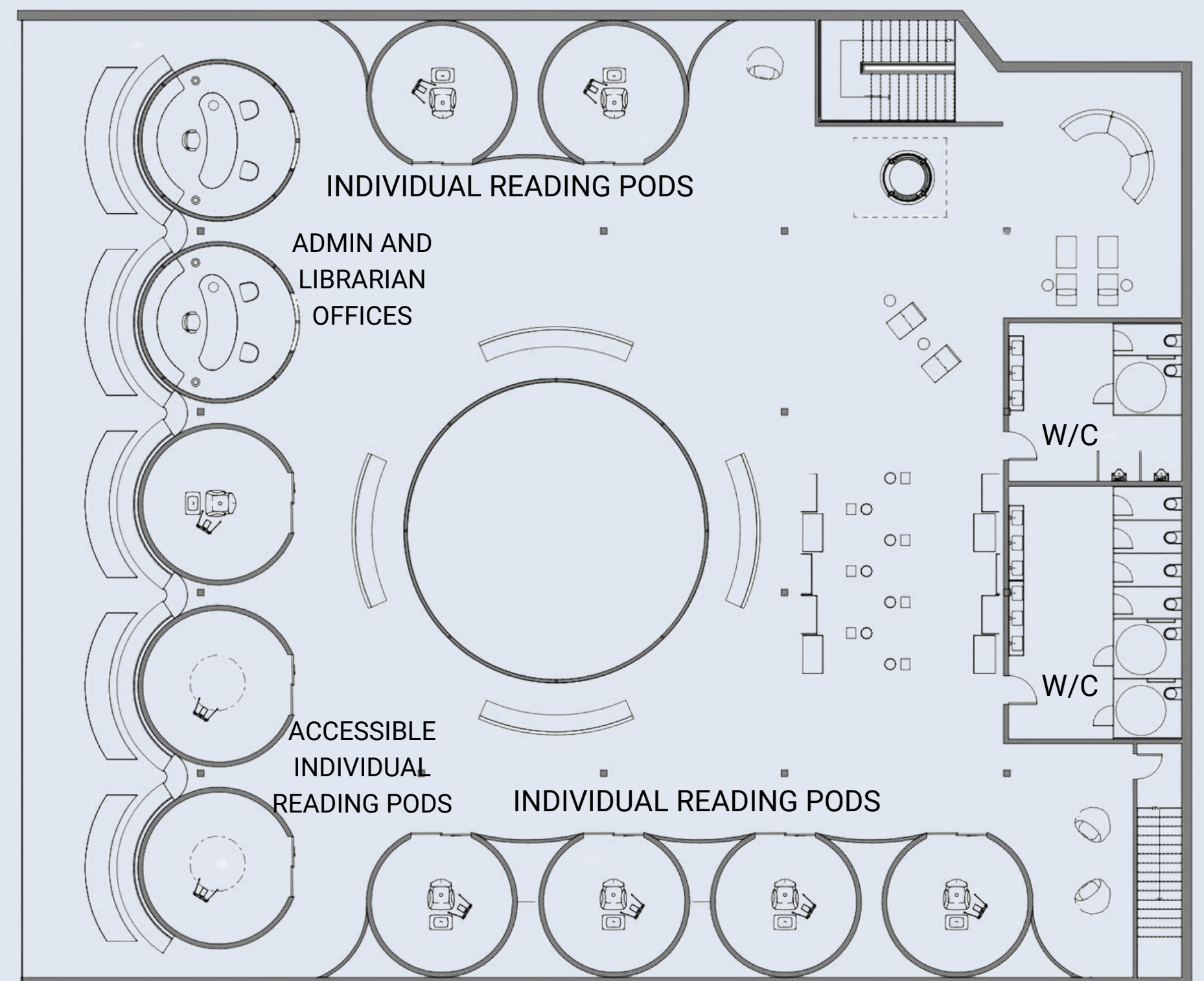
THESIS TOPIC

This Thesis project focuses on the development of a Technology Integrated Immersive Library. The goal for this project was to enhance the reader's experience and senses in a library settings through the application of interactive technology. Being an enthusiastic reader, I deeply value the transformative influence of books and the immersive worlds they present. My personal enthusiasm for reading motivated my thesis topic. I wanted to break the boundaries of traditional library environments, offering readers an unparalleled journey into the captivating realms of literature and enhancing their reading experience.

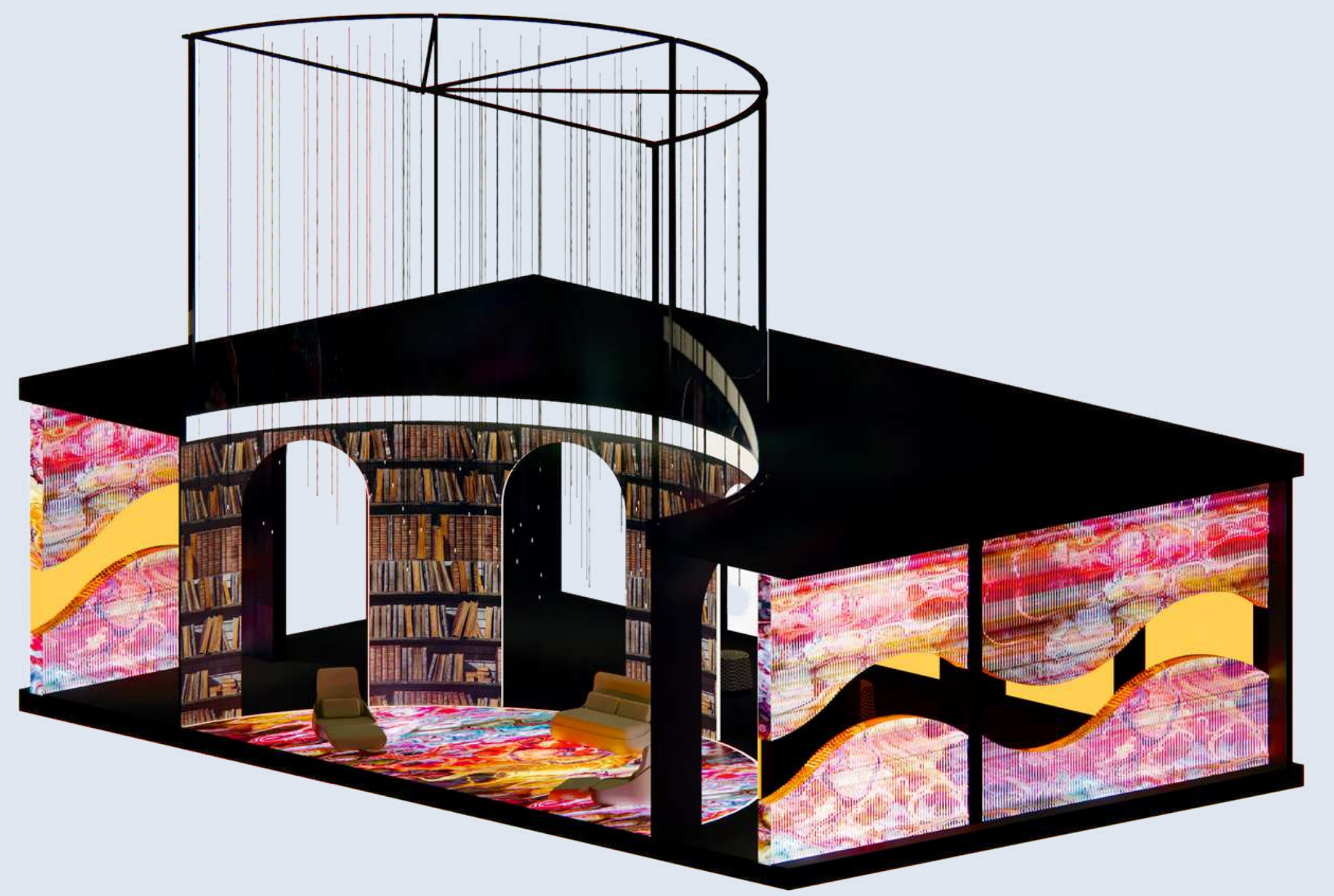
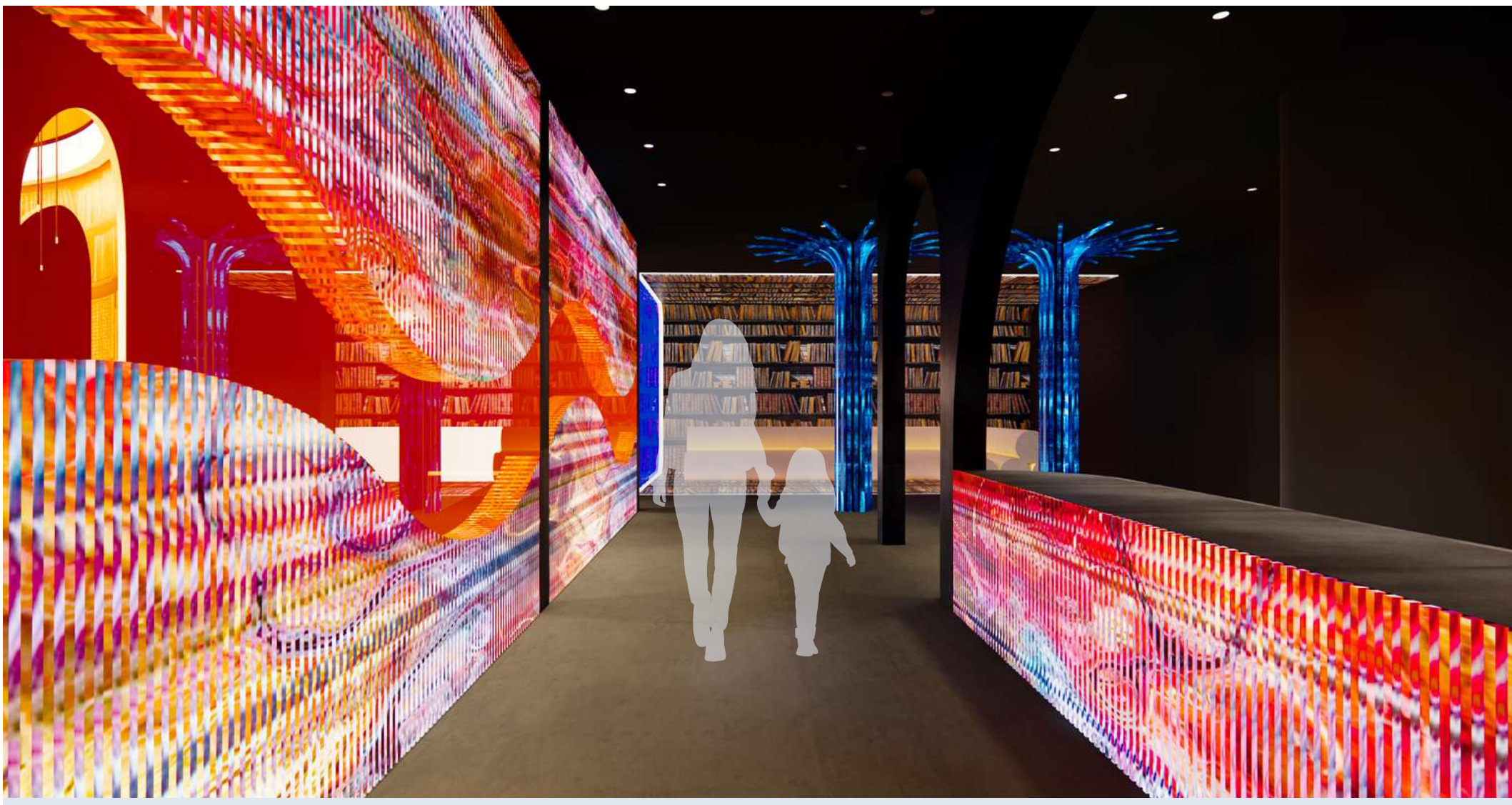
The power of literature takes us to extraordinary realms, connecting us to something profound, beyond the physical limitations of our body and the world around us. Reading is more than just interpreting words on a page; It's about creating a vivid mental picture and immersing oneself in the story's setting.



FIRST FLOOR



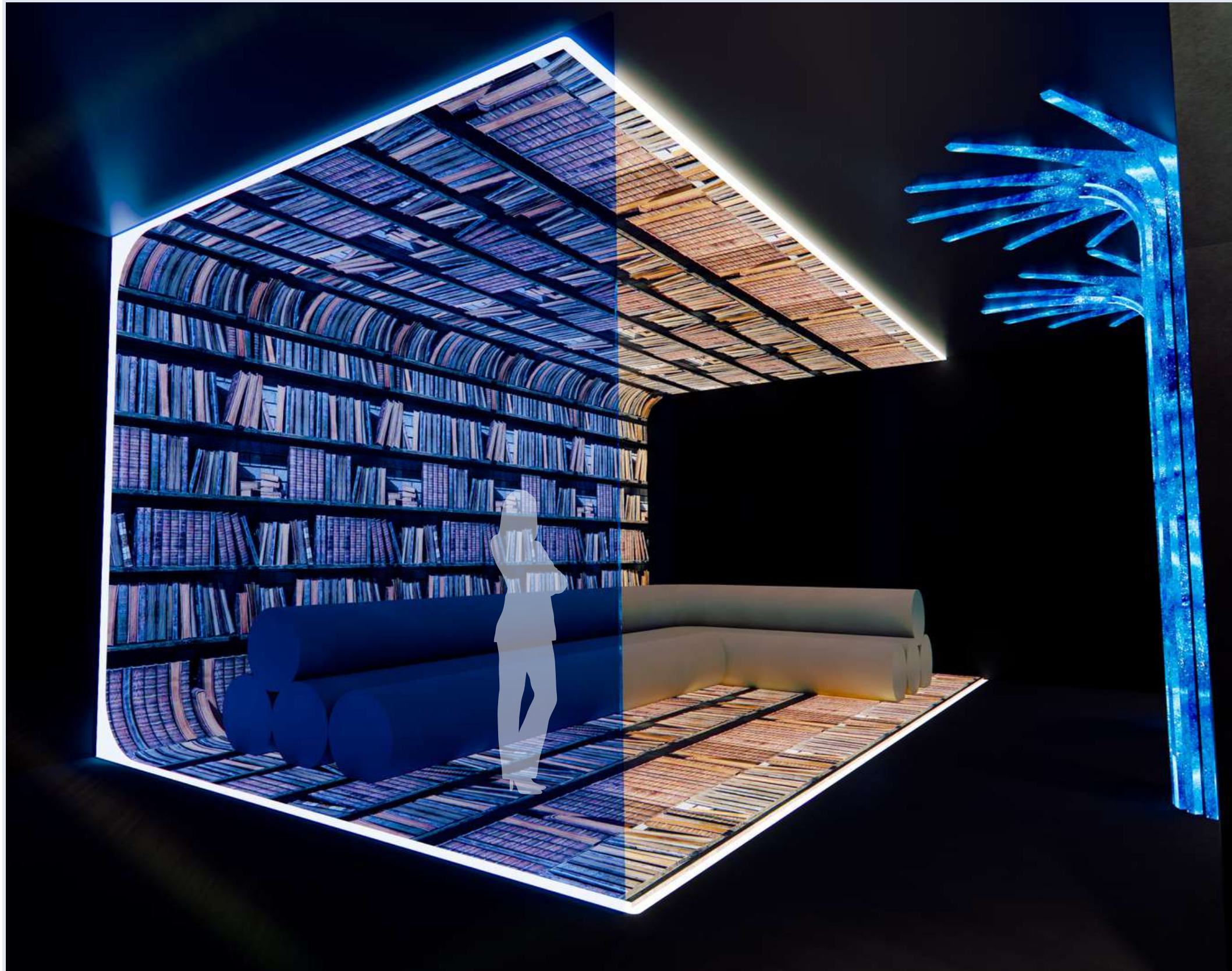
SECOND FLOOR



CONCEPT

TRANSCENDENCE - "EXISTENCE OR EXPERIENCE BEYOND THE NORMAL OR PHYSICAL LEVEL."

Transcendence refers to an experience that goes beyond the limitations of our physical world. It is often associated with a feeling of connection to something greater than ourselves. It also refers to the state of being beyond the limitations of our current existence through a transformation of consciousness. It is a concept that inspires wonder and curiosity, and encourages us to explore the unknown depths of our own existence.



The proposed immersive library environment will enable readers to dive deeper into the enchanting worlds crafted by their favorite literary authors. The technology serves as a catalyst, enhancing the atmospheric elements of the narrative, without interfering with the reader's imagination.

