

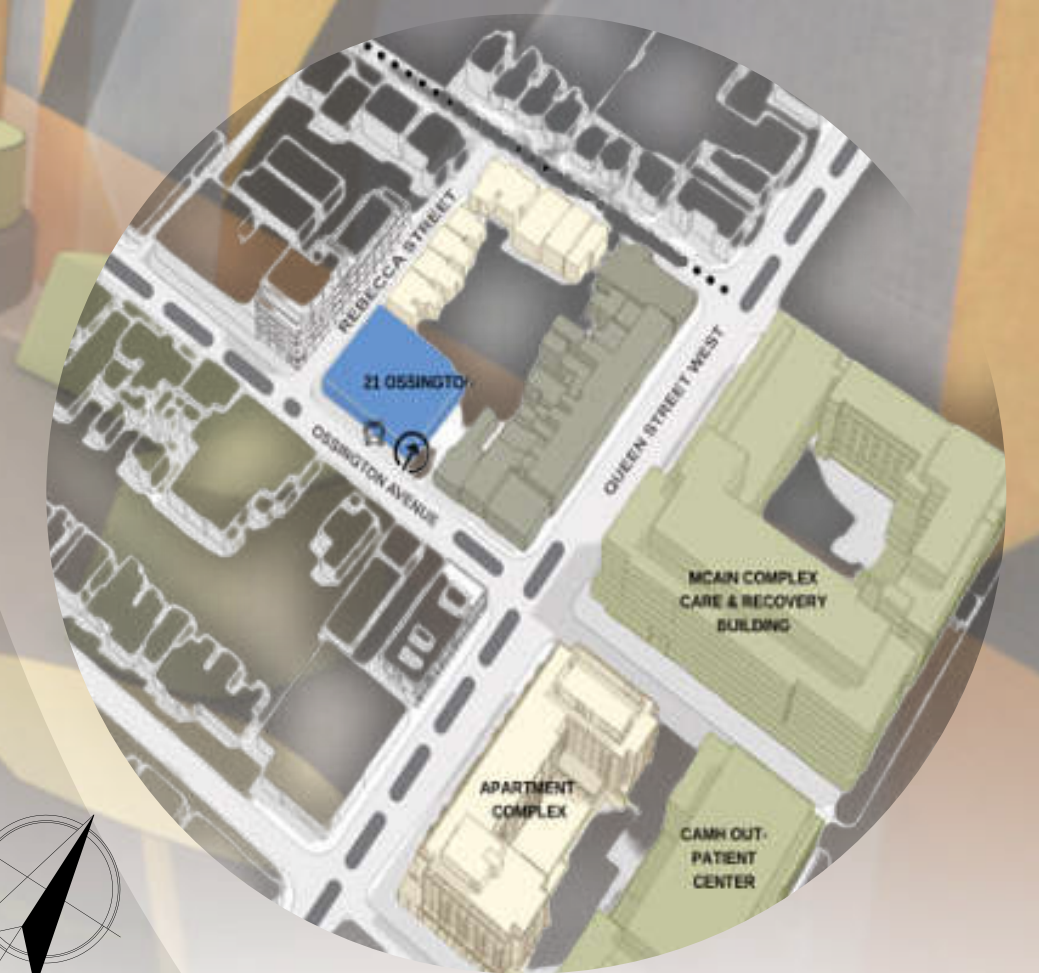


COHOUSING FOR INTERNATIONAL STUDENTS

SARA PIEDRAHITA



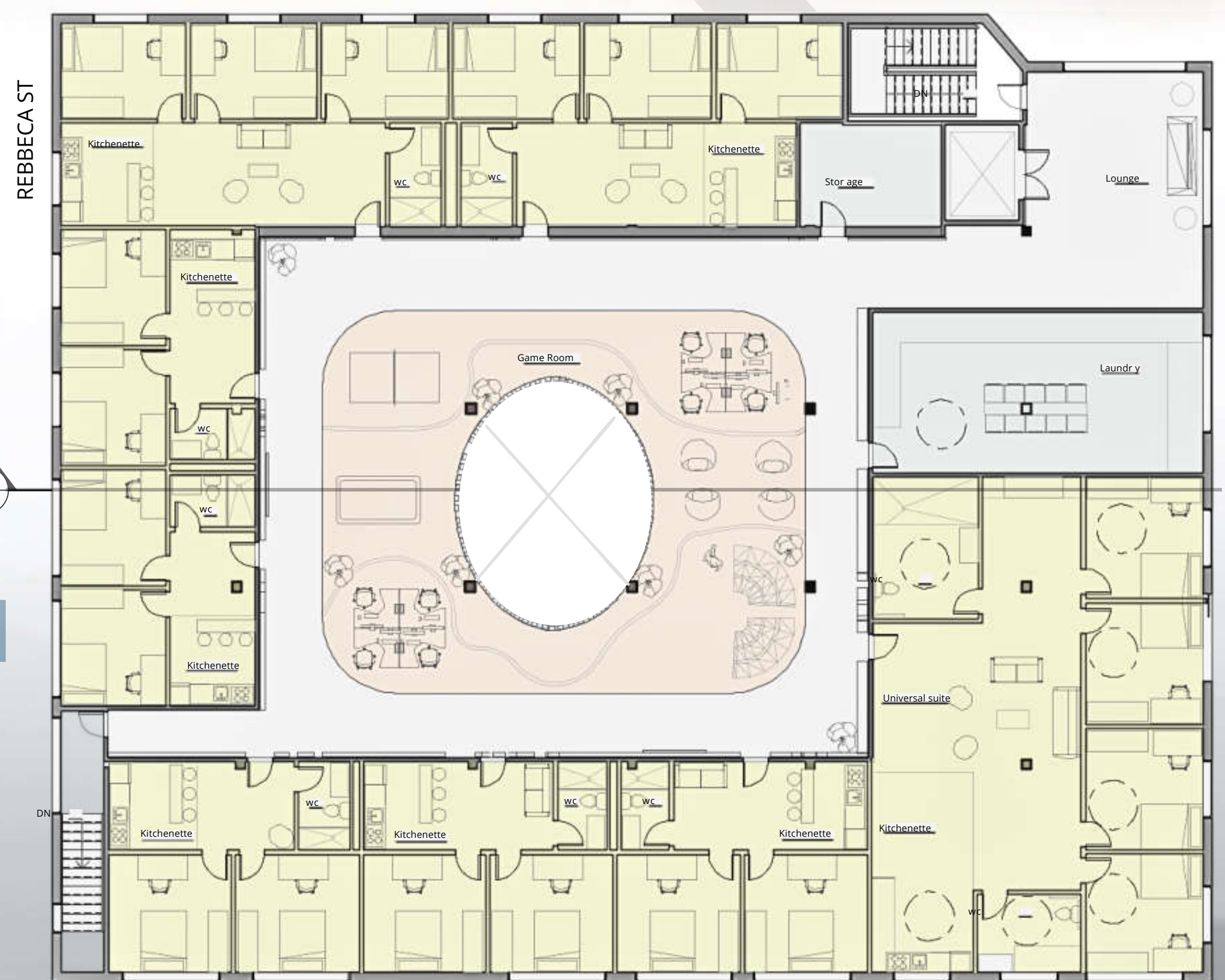
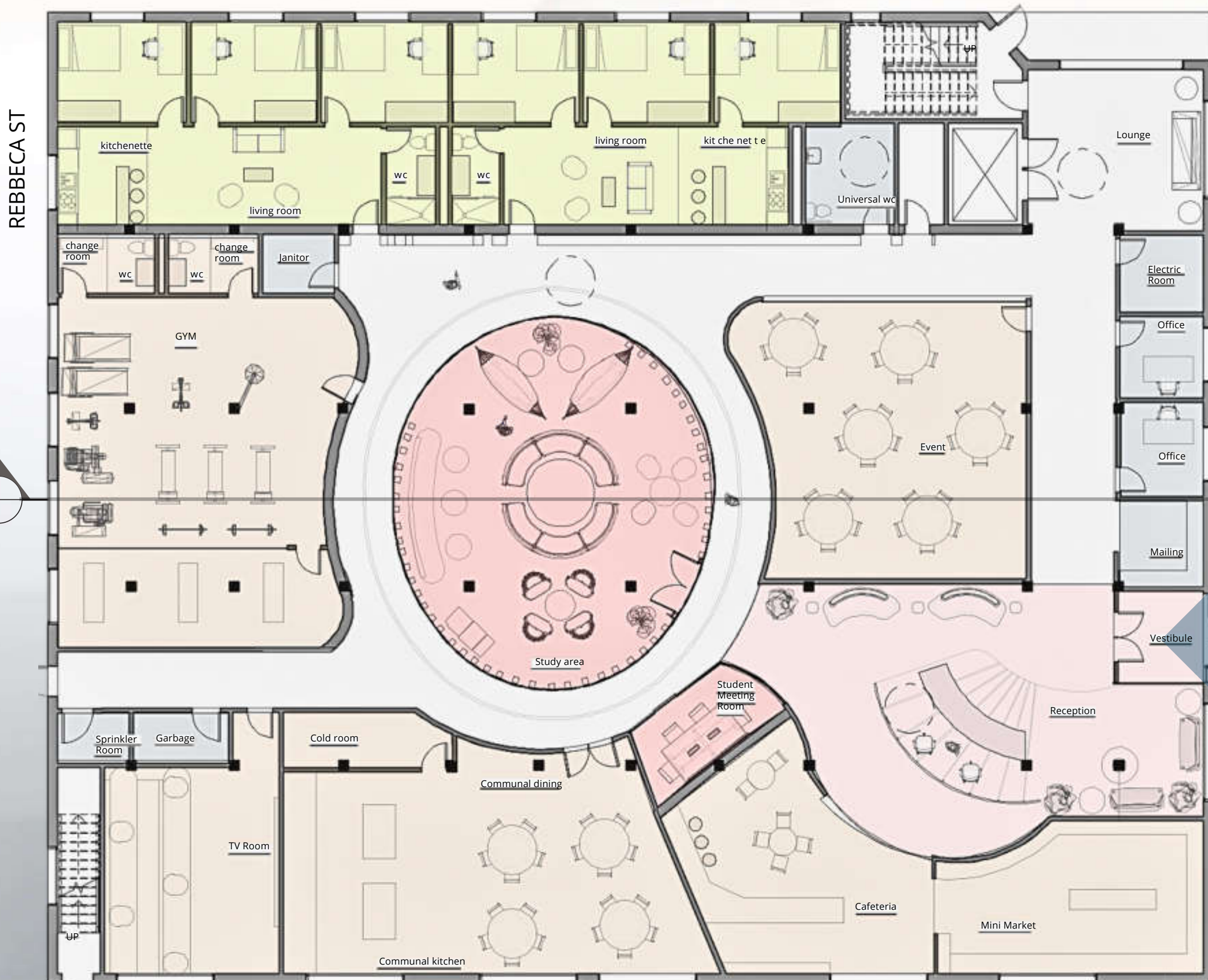
SITE PLAN



Introducing the WHO International Student Residence in Toronto: a dedicated space for international students recently arrived in the city. The residence offers a safe, supportive community where students can study and thrive together. Recognizing the challenges of adjusting to a new environment, particularly feelings of isolation, our aim is to provide a welcoming atmosphere that embraces diversity and fosters a sense of belonging.

GROUND FLOOR - Not to scale

SECOND FLOOR - Not to scale

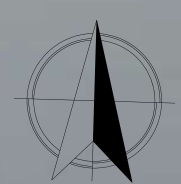


OSSINGTON AVE

OSSINGTON AVE

REBBECA ST

REBBECA ST



- SUITES
- SOCIAL
- STUDY
- SERVICES

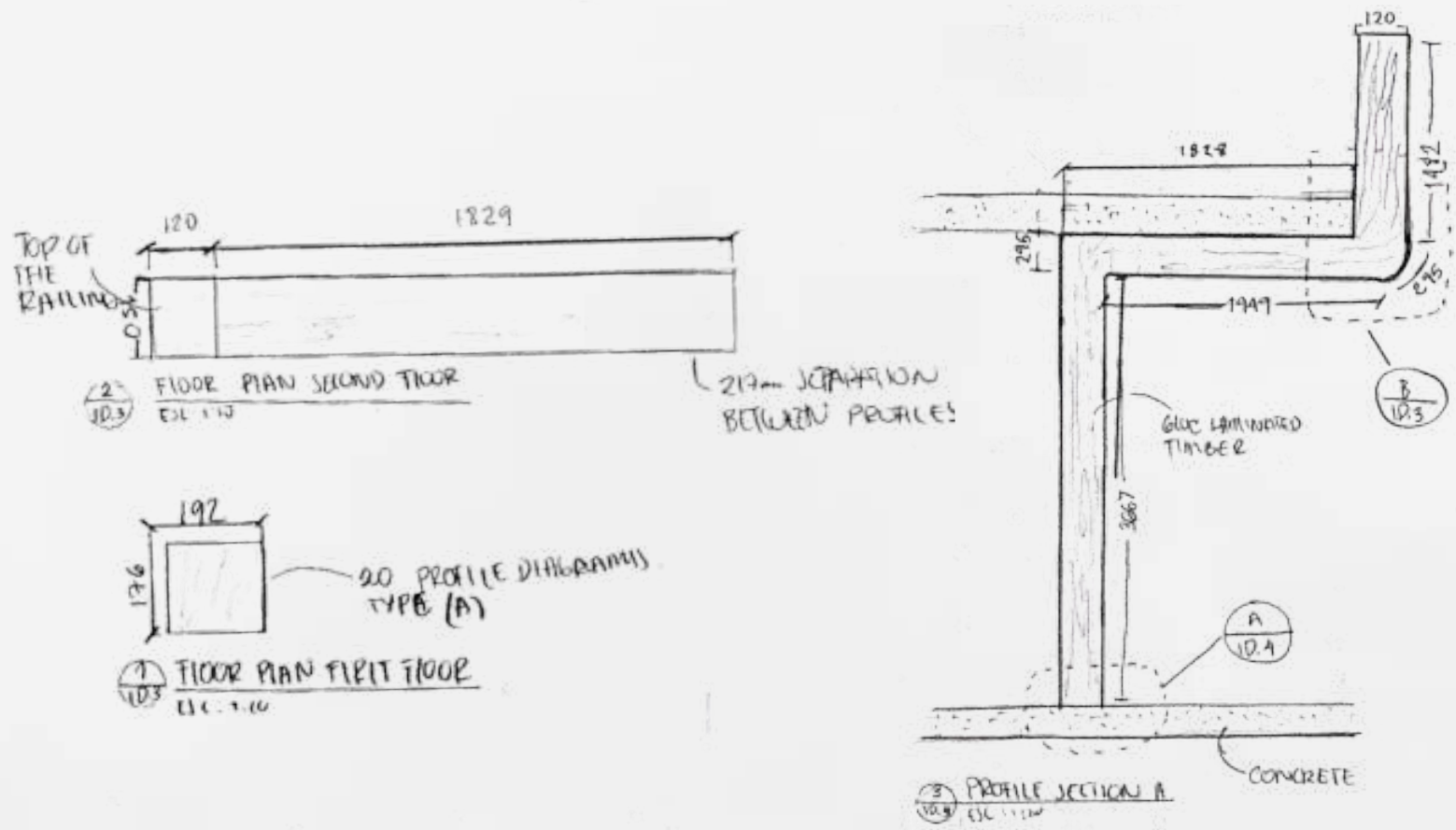
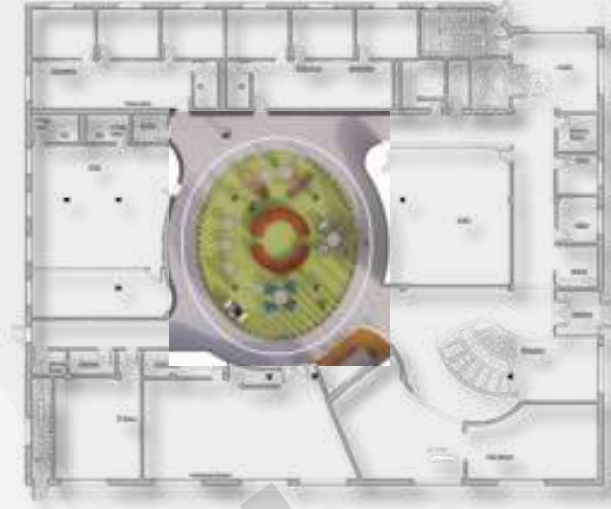
LONGITUDINAL SECTION



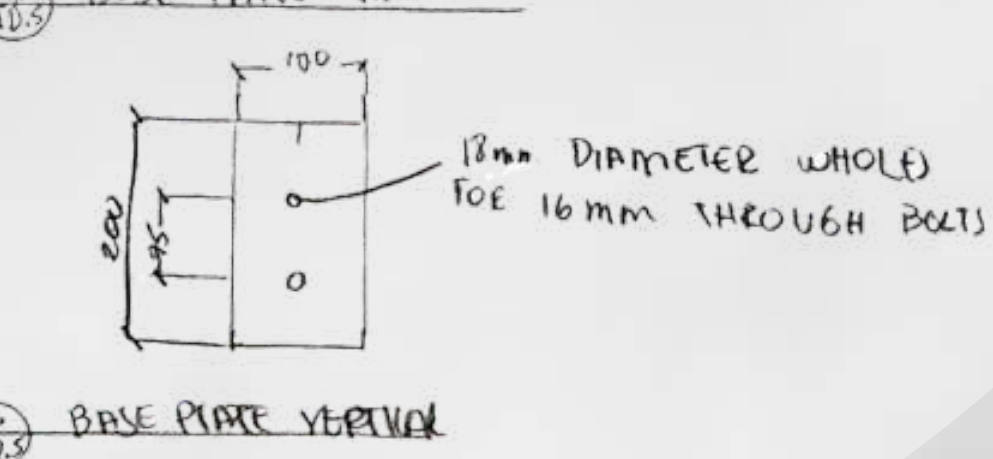
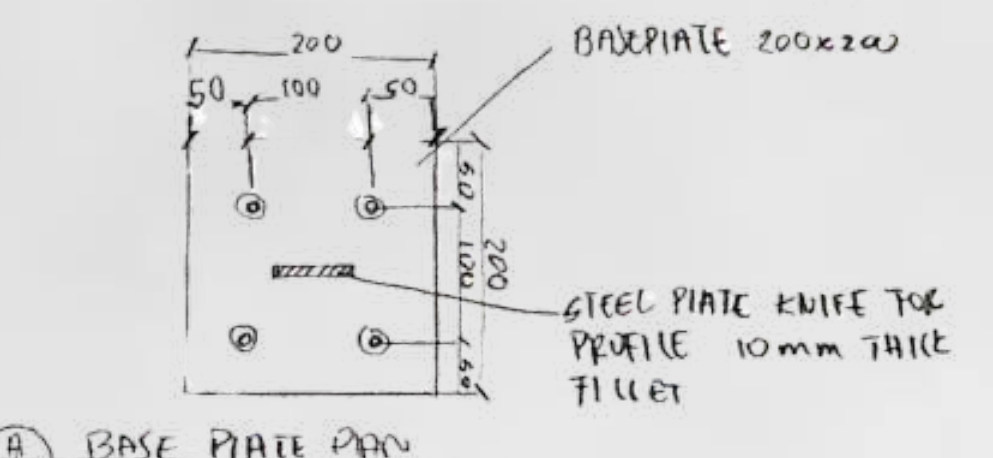
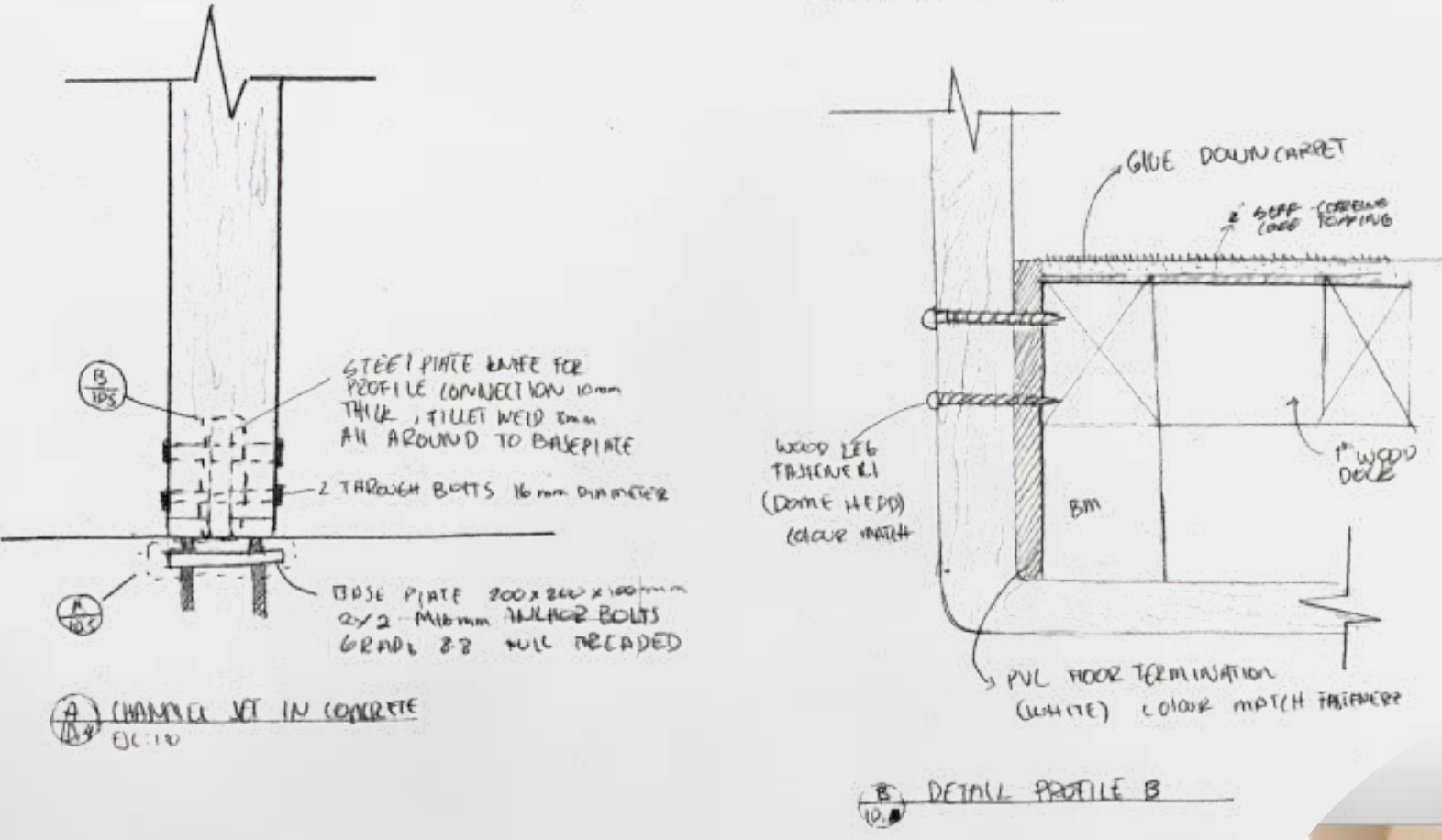
DETAIL DRAWINGS

KEY PLAN

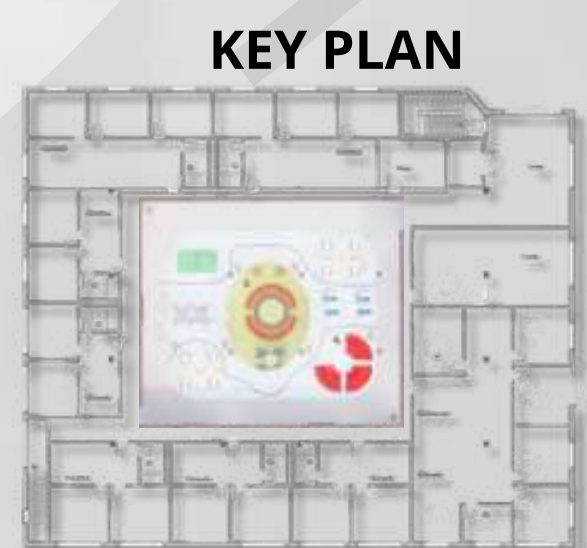
STUDY AREA



GAME ZONE



GAME ZONE



LIGHTING



MATERIALITY

Flooring/LV T ProjectFlor Elite	Surfaces/Laminate Nevamar Aurora Oak	Custom wallpaper Wallsauce	Acoustic wood panel Armstrong	Acoustic carpet Ege carpet	100% Polymer Urethane Texture Plus Faux Wall Panels	Maize fabric CF Stinson Essential	Acoustic carpet - lime Ege carpet
------------------------------------	---	-------------------------------	----------------------------------	-------------------------------	--	--------------------------------------	--------------------------------------