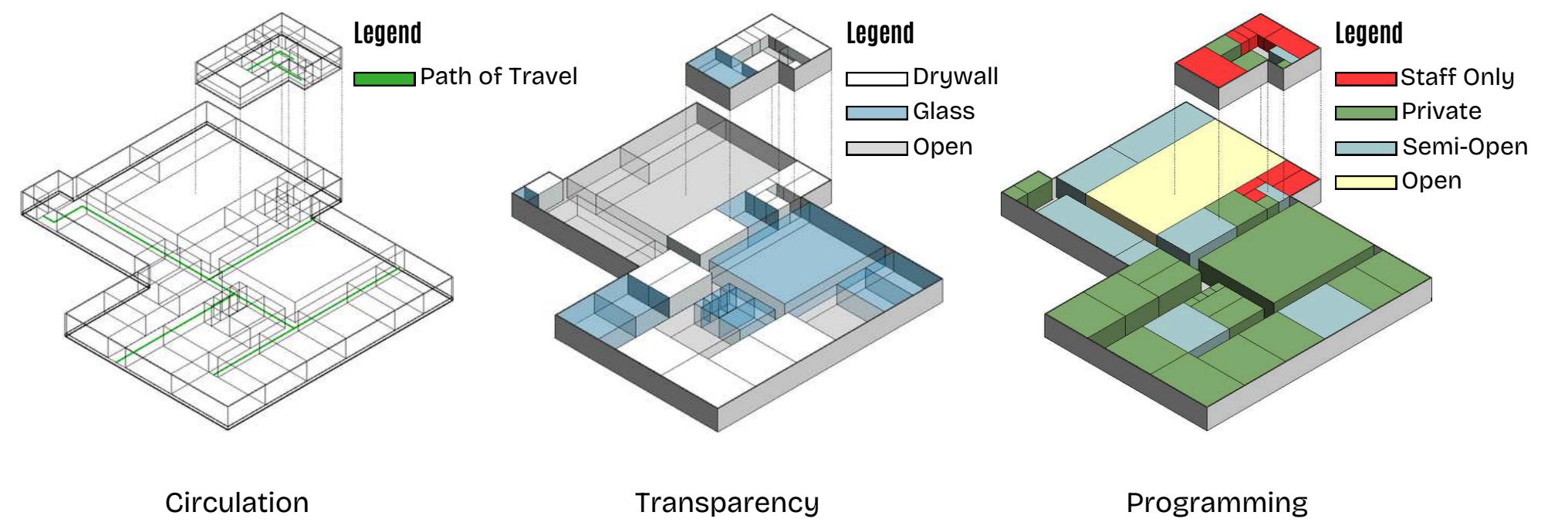




# ACADEMIC LIBRARY

SAMANTHA TERRANOVA

## EXPLORATION



Learning Commons

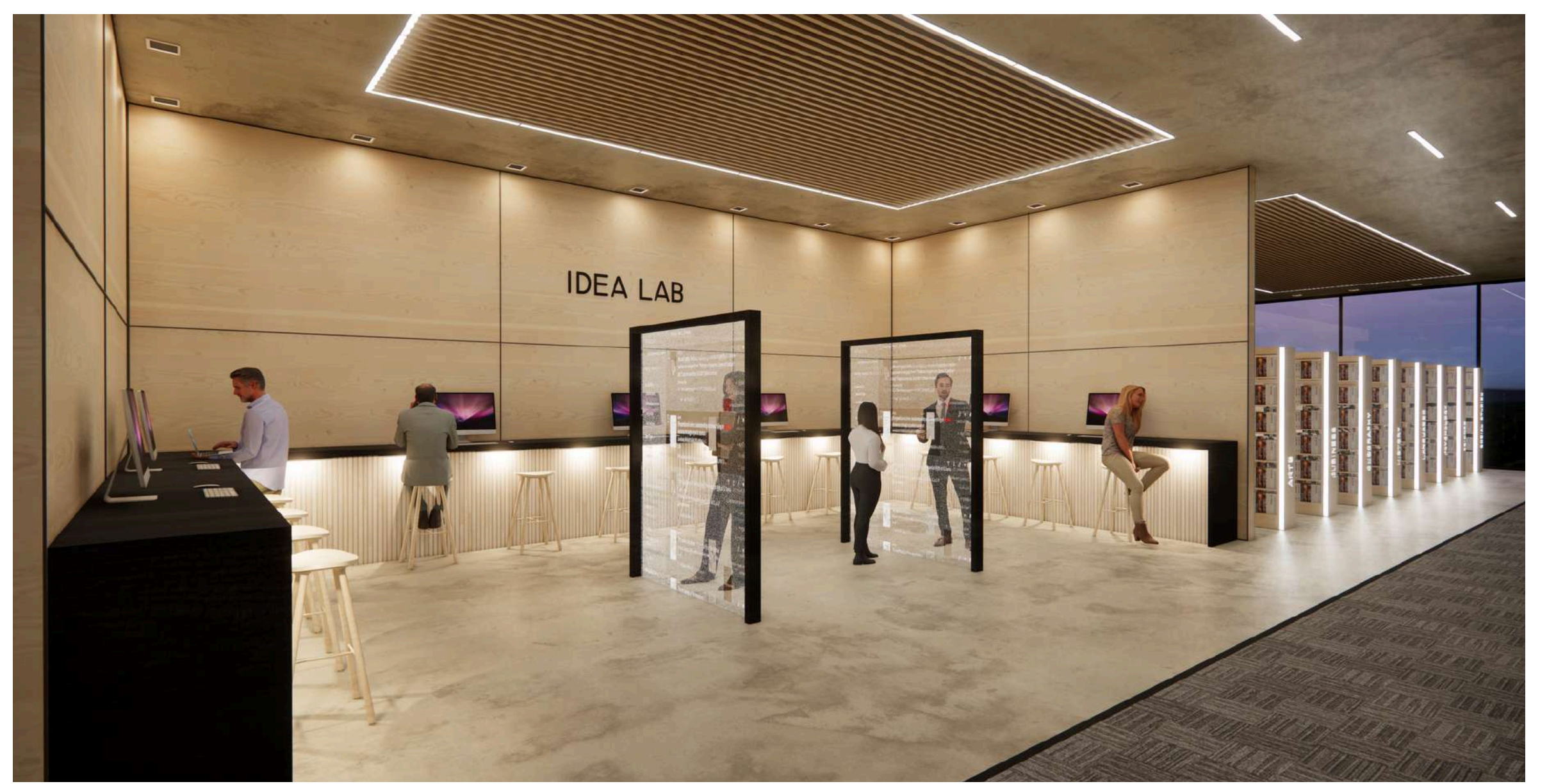
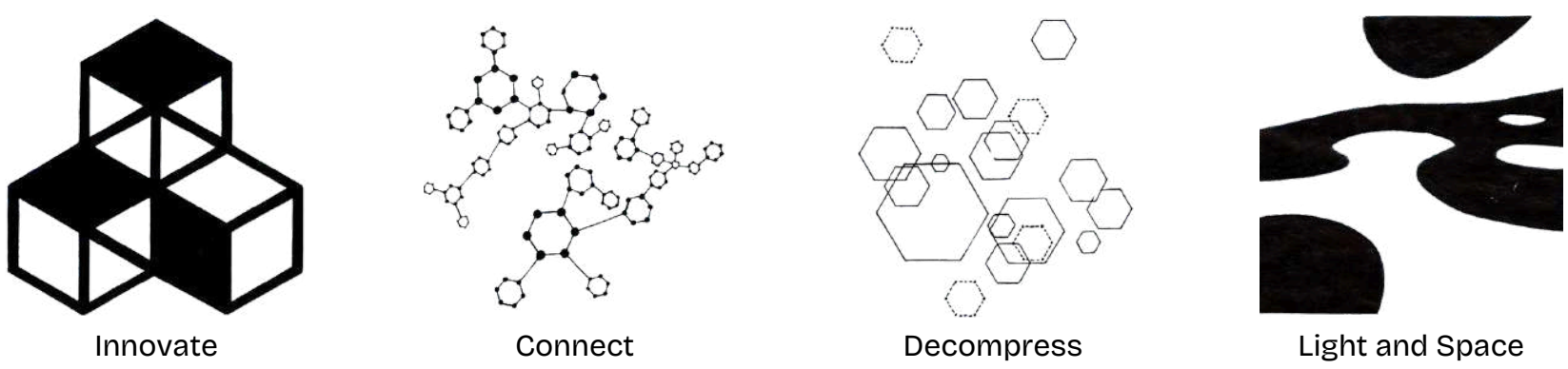


Building Section

## THE CONCEPT

This library design is centred around innovation and meeting the evolving needs of learners in the digital age. It aims to transform the traditional academic library into a dynamic hub of innovation and collaboration tailored specifically for Humber students. The goal is to create inclusive, integrated spaces where college and university-level students can study, decompress, and connect. This will be achieved through the creation of ergonomically designed study spaces, reading nooks, or multipurpose hubs. The design will focus on integrating biophilic elements, such as natural materials, light, and space, to enhance user well-being. Overall, the vision is to optimize resources, enhance the learning experience, and foster a sense of community among students within the academic library facility.

## PARTI DIAGRAMS

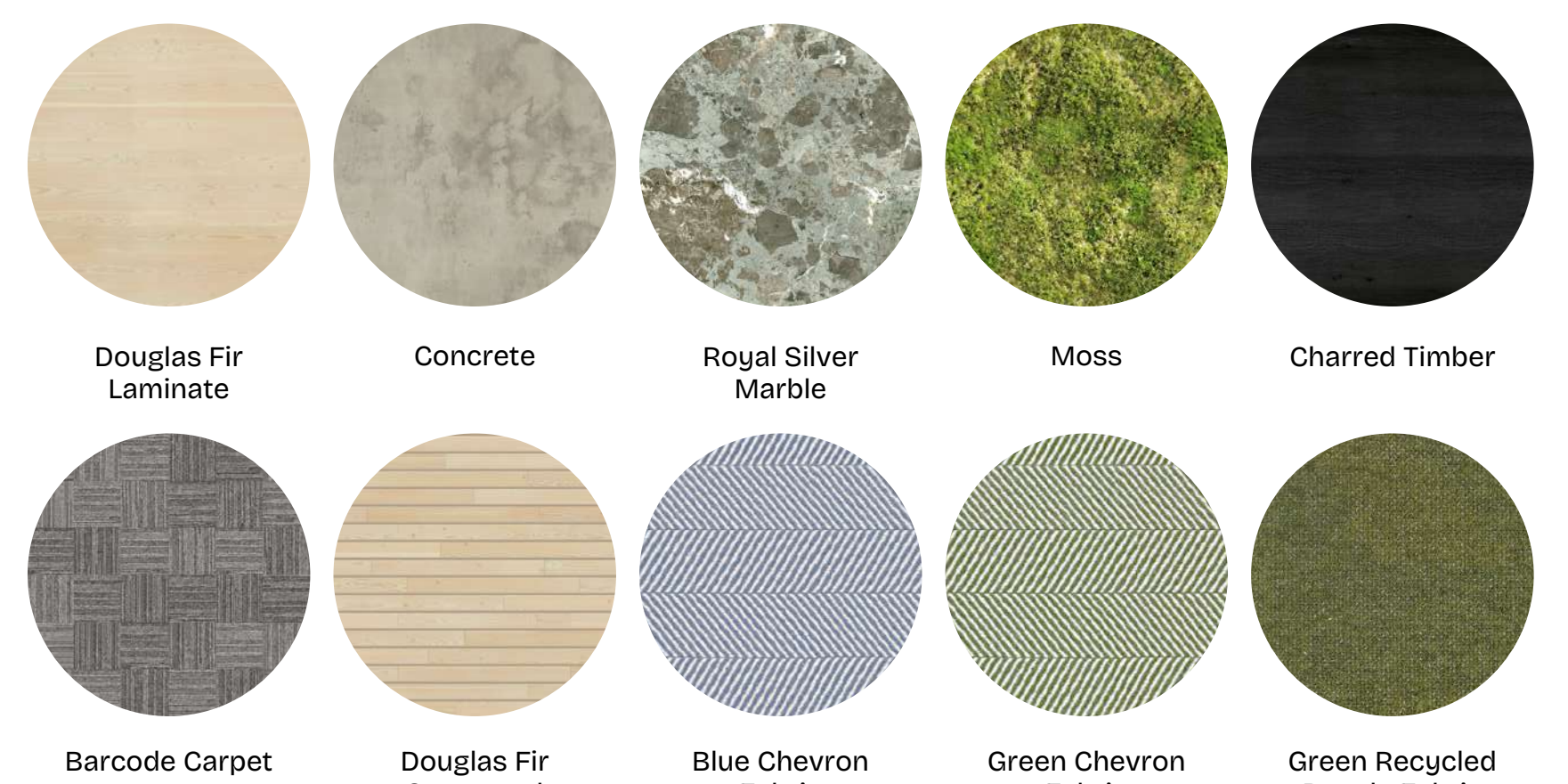


Idea Lab



Archives

## MATERIAL SELECTION

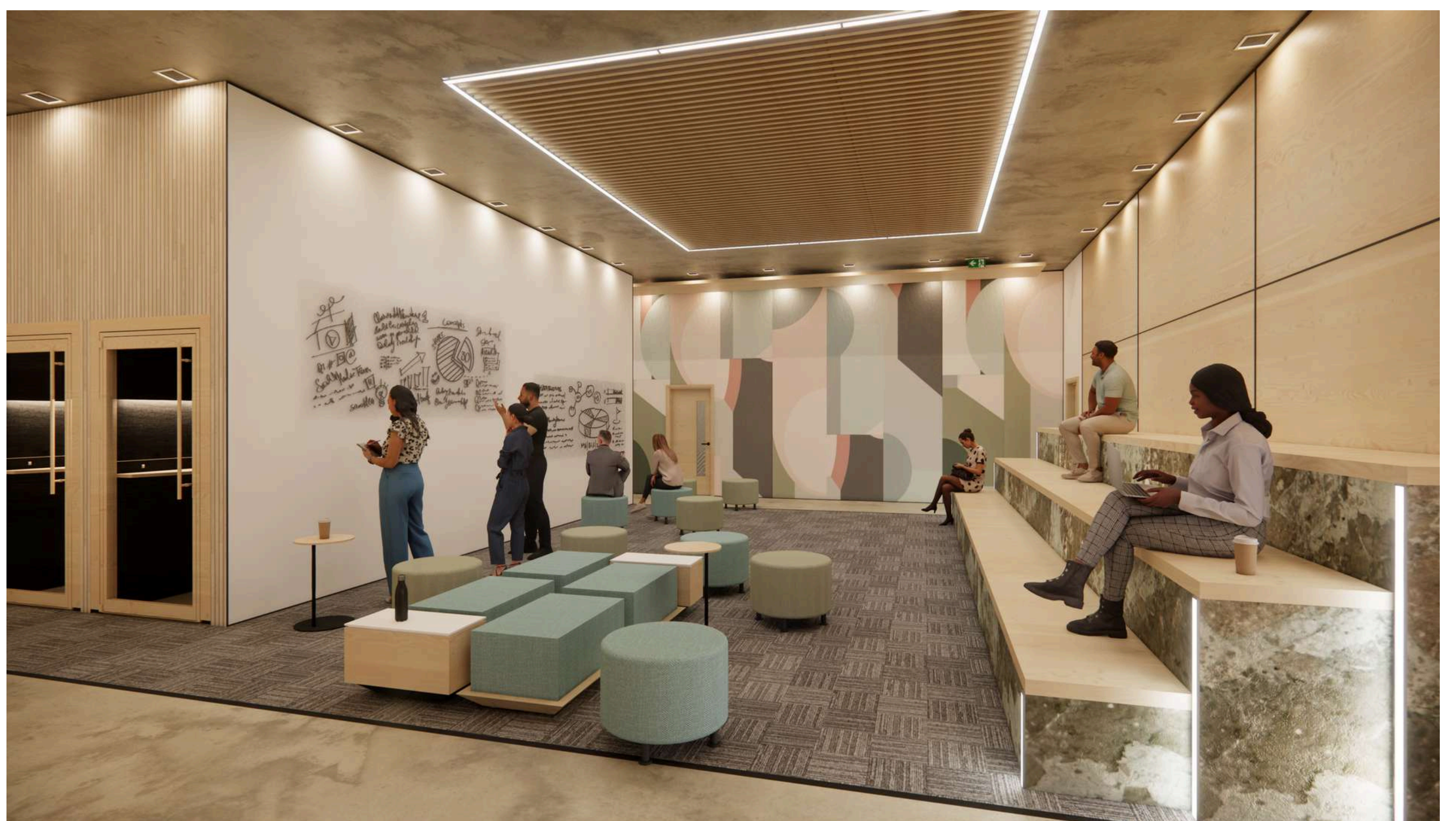
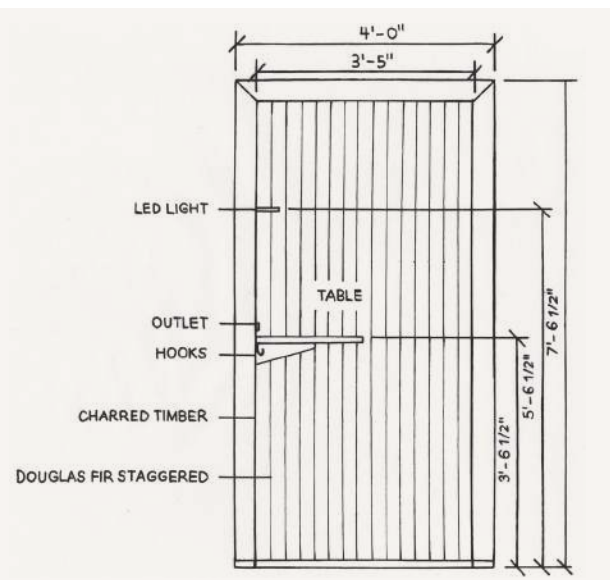






## PODS

Ergonomically designed soundproof pods cater to users in need of privacy, uninterrupted workspaces, or spaces for phone calls. These pods are tailored to accommodate users' technology needs, including laptops, ensuring a comfortable and seamless experience.



Hybrid Space

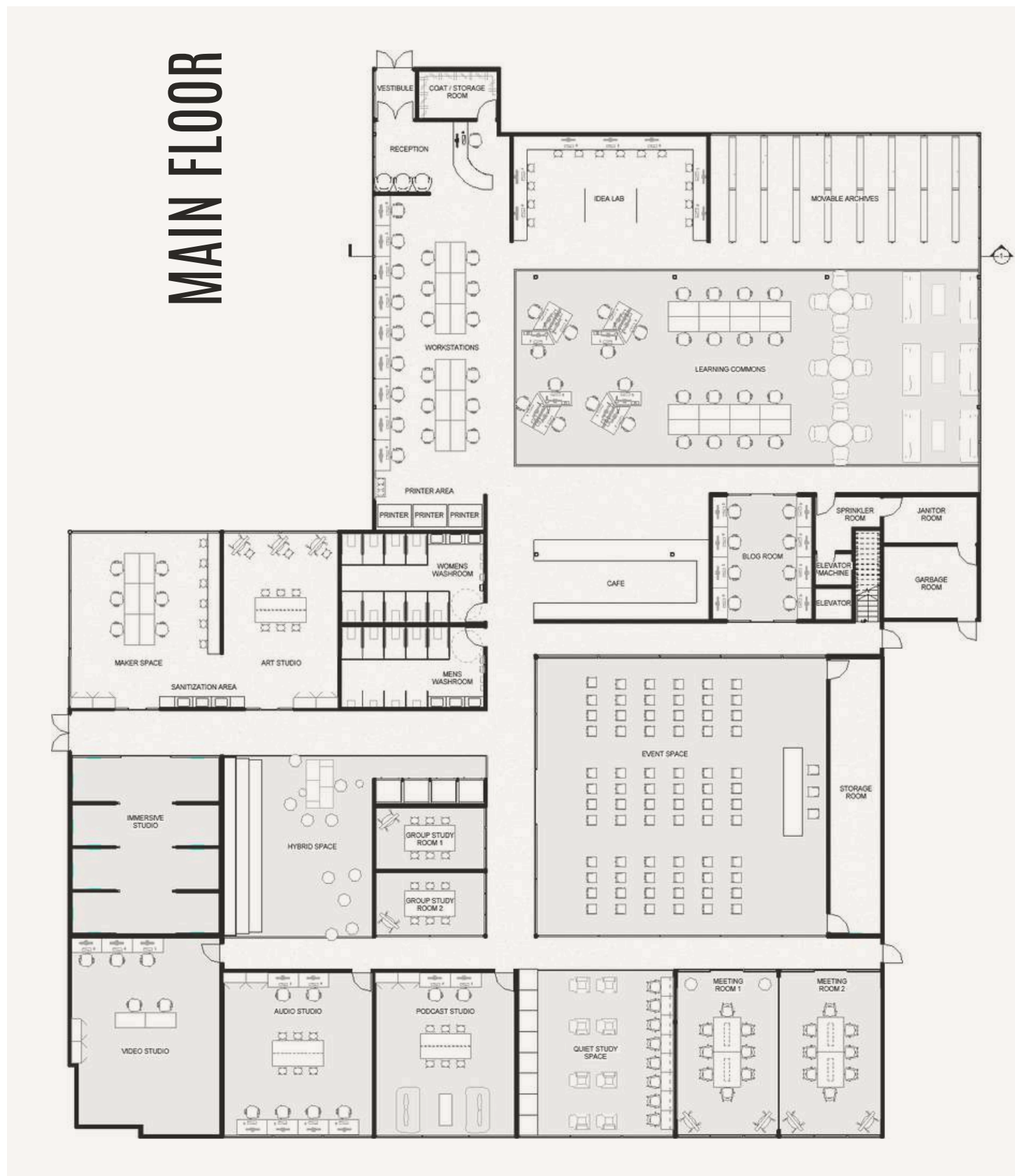
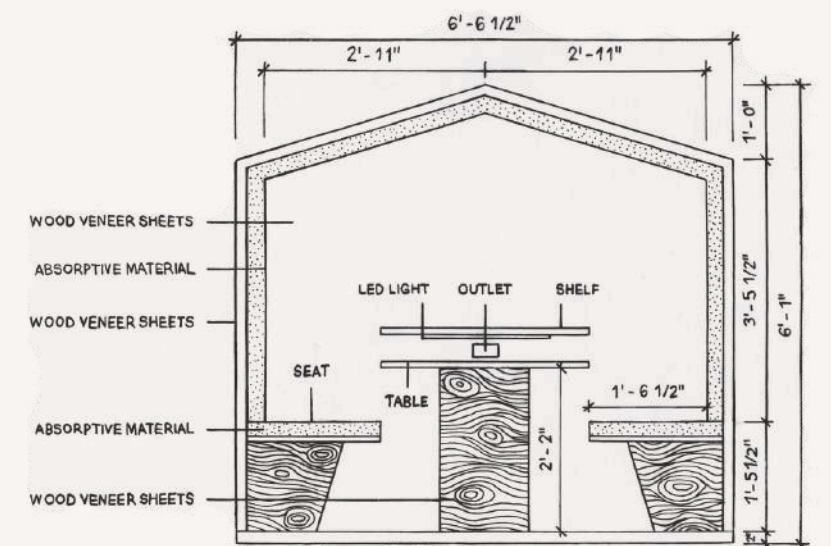


Quiet Study Space



## NESTS

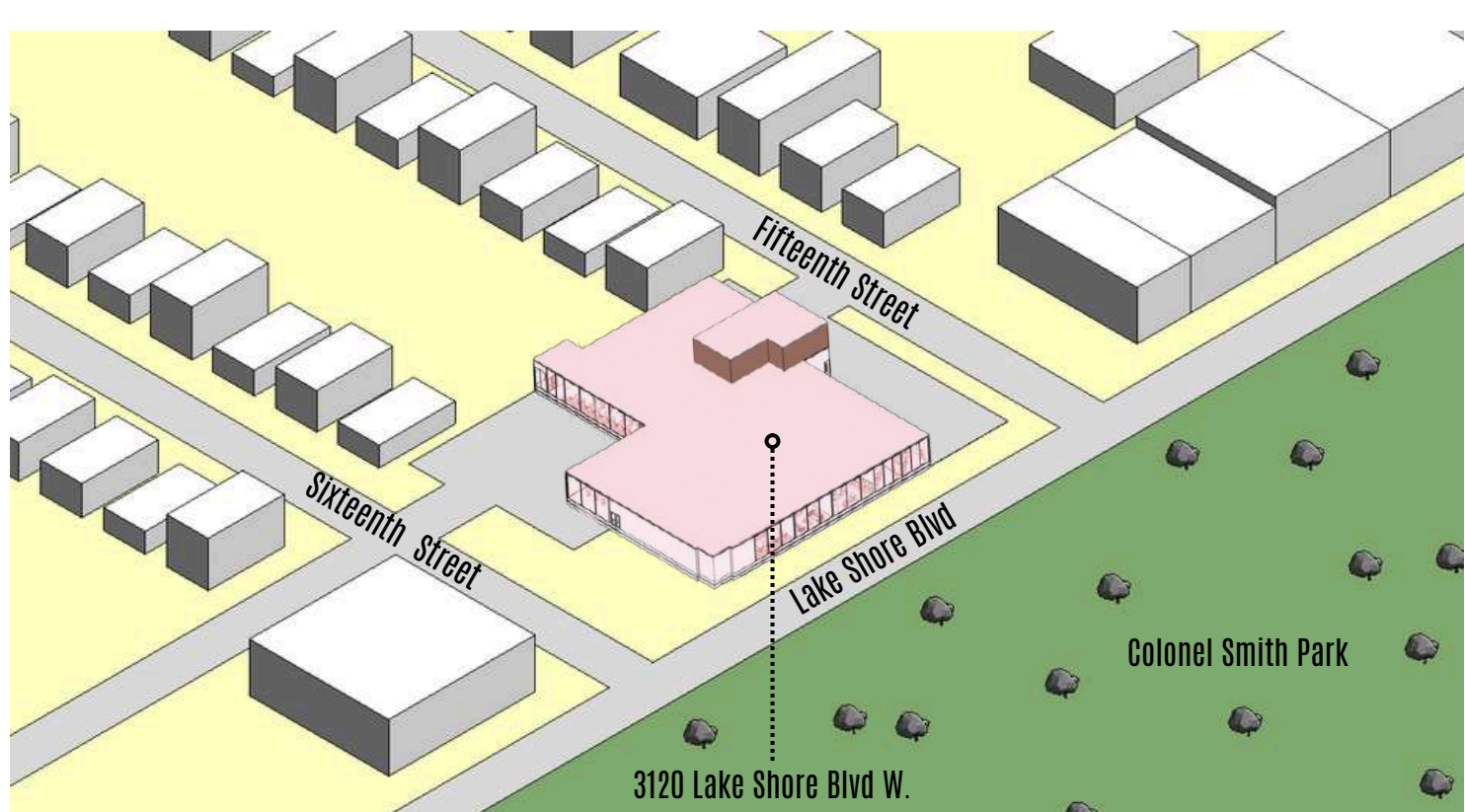
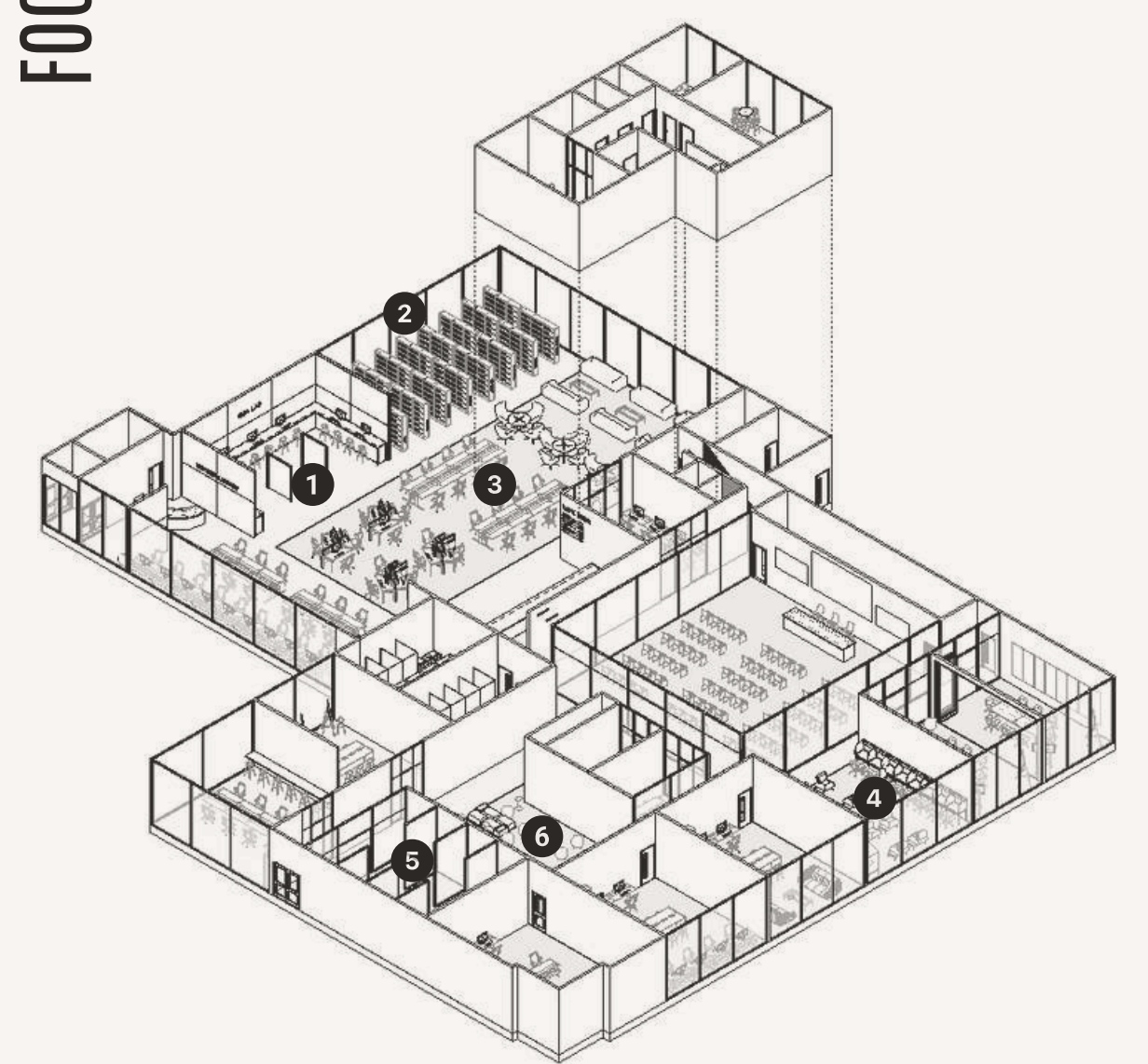
The open nests designed for students offer a sanctuary from distractions, fostering enhanced concentration for studying or focused work. Equipped with USB outlets and reading lights, they provide essential amenities for tasks requiring intense focus.



## FOCAL SPACES

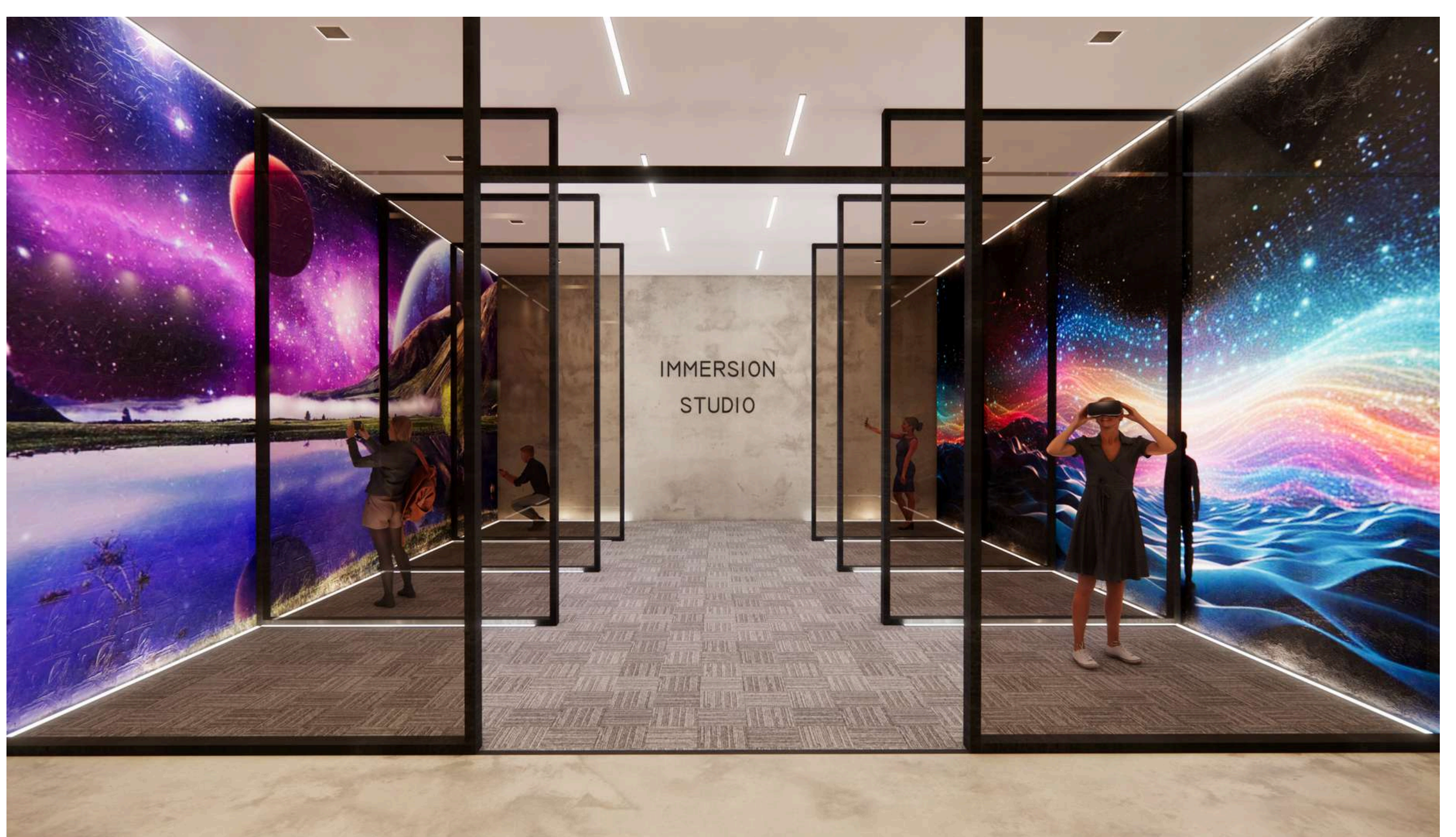
### Legend

- 1 Idea Lab
- 2 Archives
- 3 Learning Commons
- 4 Quiet Study
- 5 Immersion Studio
- 6 Hybrid Space



## SITE ANALYSIS

3120 Lake Shore Blvd W is the optimal location for an academic library. It is located on a main road with direct streetcar access, ensuring convenient accessibility for students. It is within walking distance from the Humber Lakeshore campus and currently serves as a crucial hub for post-secondary education among Humber Lakeshore students. Featuring expansive floor-to-ceiling south-facing windows, the building offers views of the surrounding natural landscape, notably Colonel Smith Park. Complemented by a courtyard on-site, it provides a serene environment conducive to study and reflection.



Immersion Studio