



LAKESHORE HOLISTIC CHILDCARE CENTRE

VINH LE

THE CONCEPT

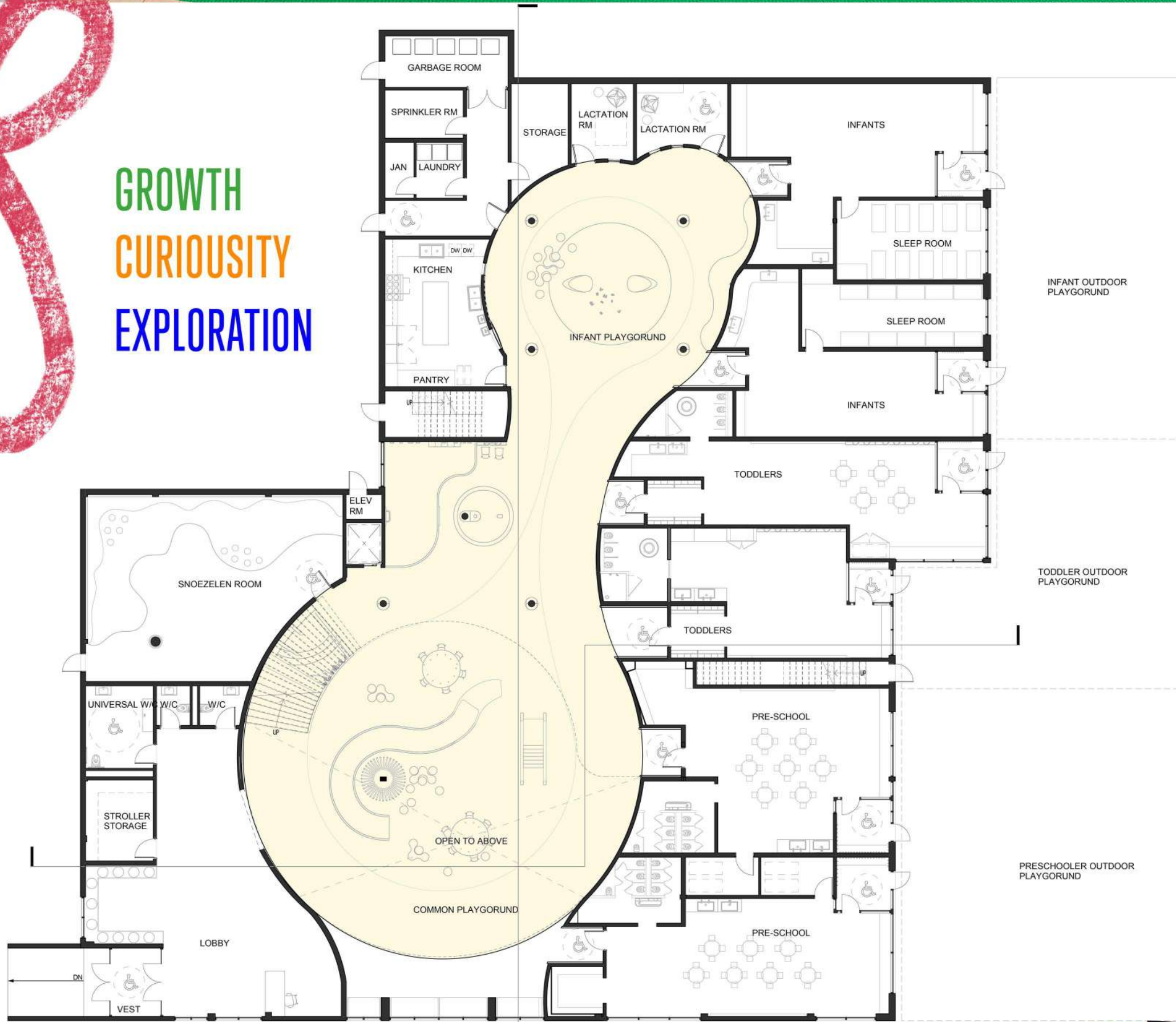
CURIOSITY fuels learning, especially in early childhood. It drives exploration and creativity, essential for fostering engagement and a love for learning. Creating stimulating environments in educational settings, like daycares, encourages children to question, experiment, and explore their surroundings.

The design concept for the daycare facility is centered on creating a nurturing haven that stimulates curiosity and promotes holistic growth.

Emphasizing nature-inspired elements and an open layout, the facility aims to encourage exploration and imaginative play among children.

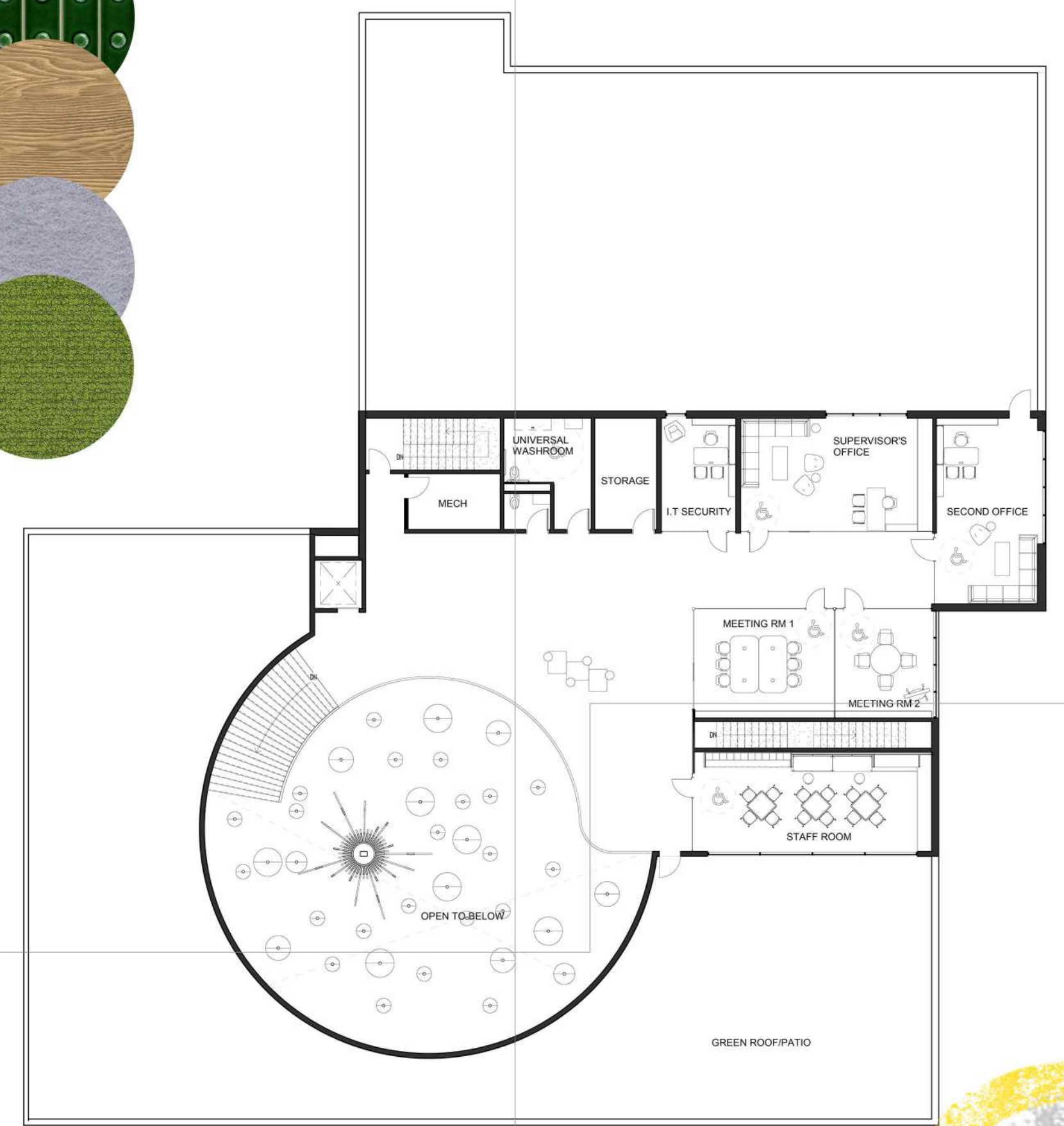


GROWTH
CURIOSITY
EXPLORATION



MAIN FLOOR PLAN

FOCAL AREA

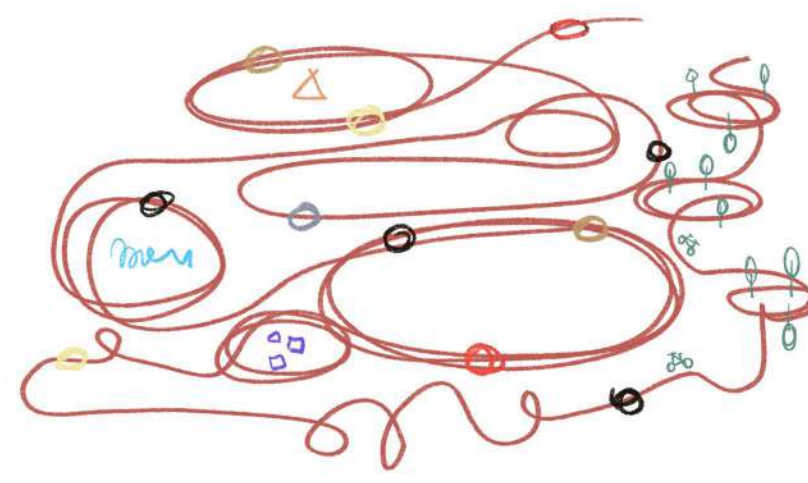
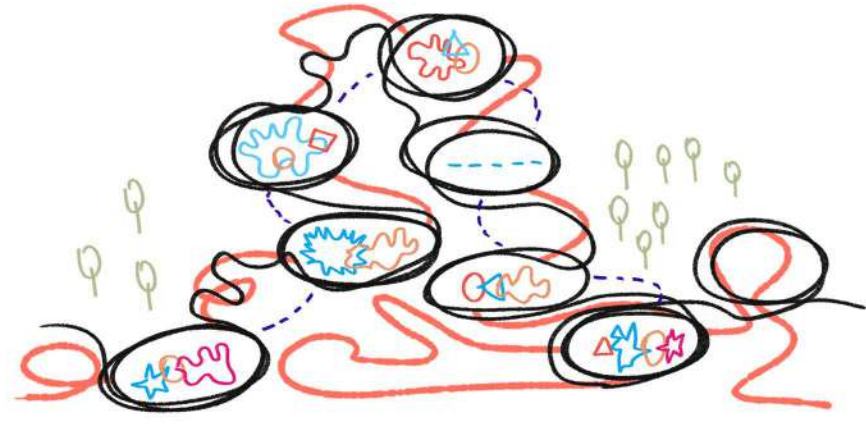
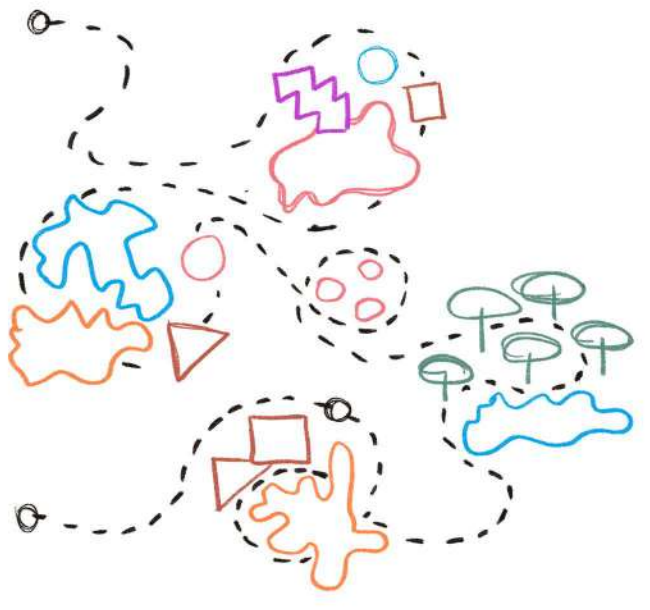


MEZZANINE FLOOR PLAN



BUILDING SECTION NORTH - SOUTH

CONCEPTUAL DEVELOPMENT



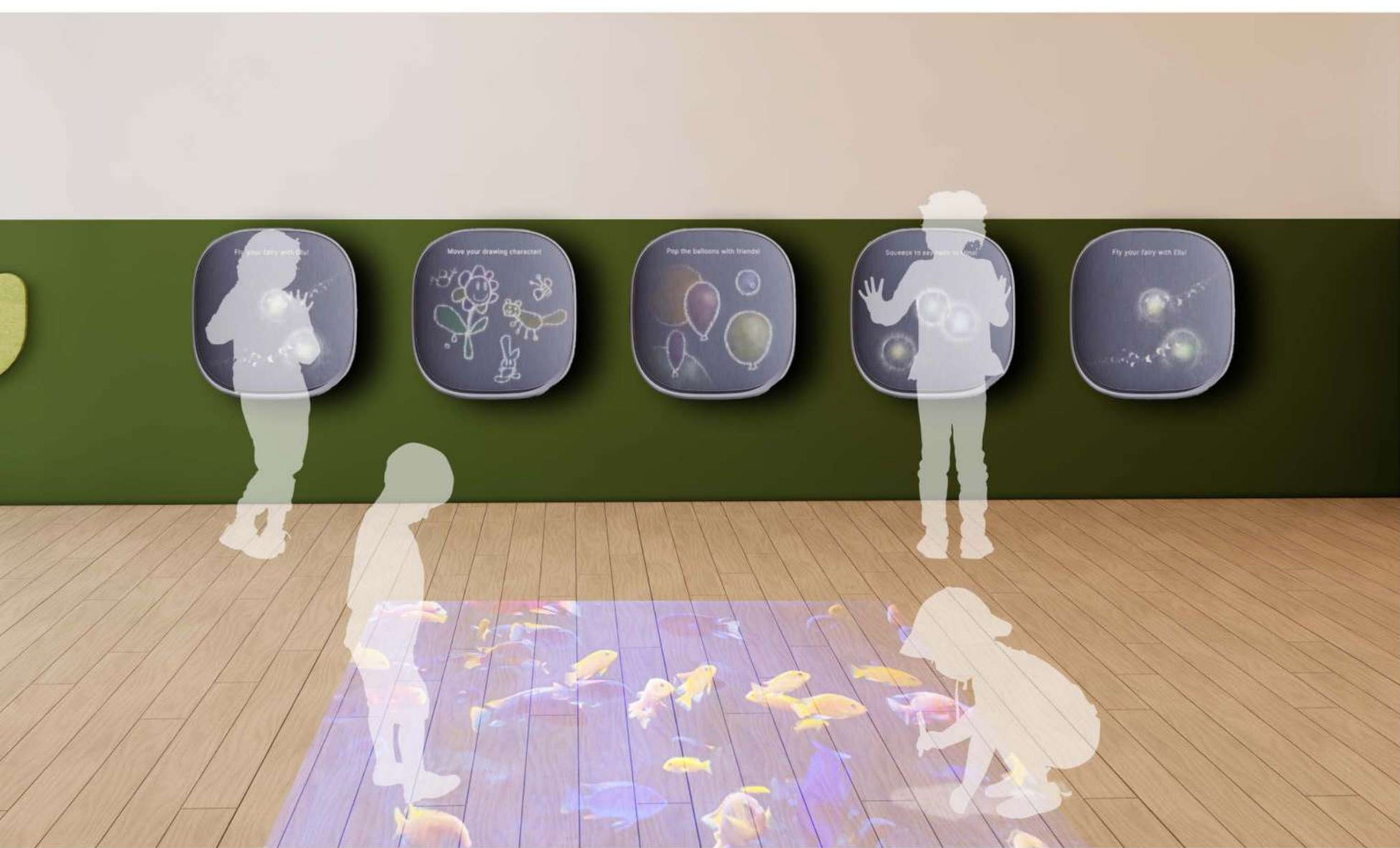
The flowing lines traverse through the space, creating an organic and fluid layout that encourages exploration and discovery. Each curve and twist of the design is carefully orchestrated to inspire a sense of wonder, inviting children to engage with their surroundings and stimulate their innate curiosity.



LOBBY



BALL PIT + CLIMBING STRUCTURE



Integrating age-appropriate technology and sensory equipment within a safe and stimulating environment allows for cognitive development and sensory learning. The incorporation of interactive elements and flexible spaces fosters social engagement and collaborative learning, providing children with a supportive space for holistic development.

